



**COBA**  
europe

Logomats





Welcome to our first brochure dedicated entirely to logomats. From high-volume printed promotional mats to luxury precision inlay solutions, we have it all.

**50** Celebrating 50 years of COBA  
Proud of our Heritage,  
Driven by our Future

The COBA group celebrated its 50th Anniversary in 2016, marking an important milestone for our ever-evolving business. COBA Europe is today one of the largest, most experienced names in the floor matting industry. We are pleased to bring you a comprehensive range of brandable mats for either your own business or your clients’.



[www.coba-europe.com](http://www.coba-europe.com)

## Contents

Logomats	4
Logomat Selector	5
<hr/>	
Logomat Precision	6
Precision Nib	8
Precision Loop	10
<hr/>	
Logomat	12
<hr/>	
Promomat	14



**COBA**  
europe

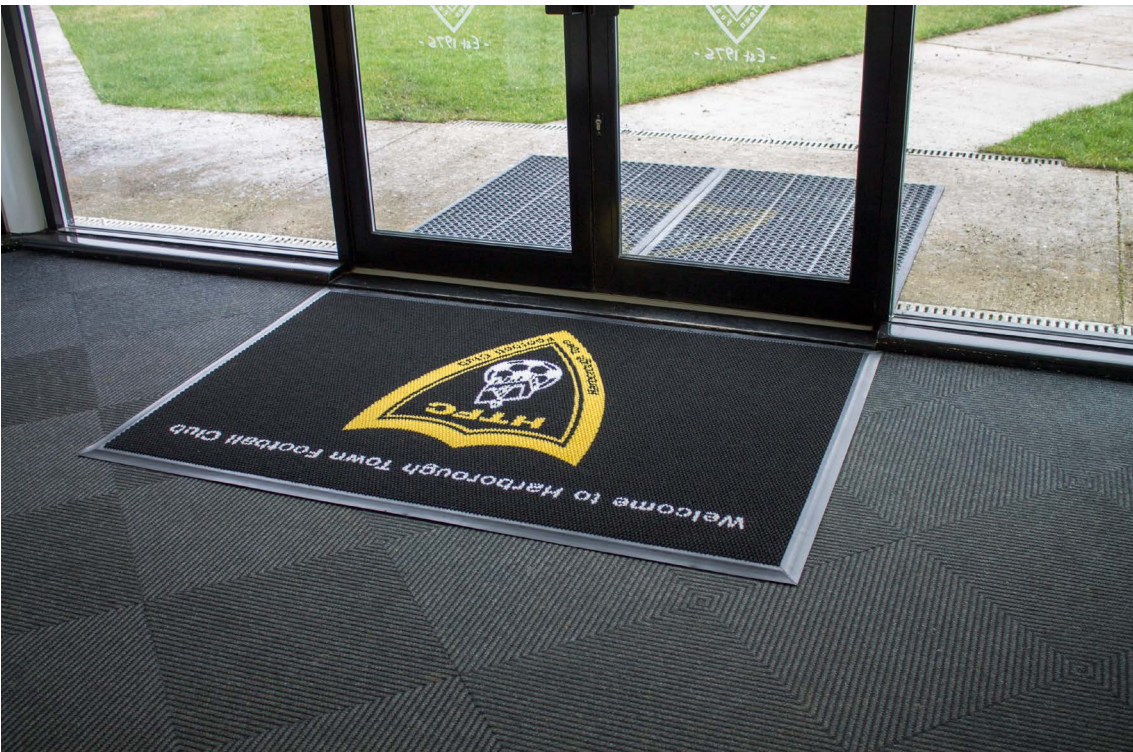


Logomats

Behind every successful business is a clear brand identity. Brand awareness is becoming ever more important in a globalised and changeable marketplace. To achieve this, you need to effectively communicate your brand at every possible opportunity. Conveying your marque in the best light at every touch point is vital to creating and sustaining a positive brand image.

Logomats allow you to present your company's brand logo and/or key messaging at that crucial point where visitors cross the threshold to your business. It is about first impressions and first impressions are always the most memorable. Important when these visitors are potential clients!

Every building has an entrance. You can make yours stand out from the crowd by displaying your company logo at the door, to ensure every visitor leaves with a lasting, very positive, very memorable impression about your business.



Logomat Selector

	Promomat	Logomat	Precision Loop	Precision Nib
Price	£	£ £	£ £ £	£ £ £
Quick Decision	High volume / low cost promotional mats	Versatile jet printed loose lay mats	Heavy duty premium bespoke mats, precision cut to give superior appearance	Heavy duty premium bespoke mats, precision cut to give superior appearance
Pedestrian Traffic Volume				
Applications	Marketing promotions, Exhibitions, Events, PR, Hospitality, Bars, Retail	Medium traffic locations such as schools, offices, small retail, leisure	Medium to high traffic locations such as retail, health, transport, large offices and leisure	Medium to high traffic locations such as retail, health, transport, large offices and leisure
Colours	Unlimited (digitally printed)	Select from 40 colours (max 6 per mat)	Select from 15 colours	Select from 18 colours
Edging	Integrated edging	Integrated edging	Available with 50mm PVC edging for surface mounted applications, or without when installed in a matwell	Available with 50mm PVC edging for surface mounted applications, or without when installed in a matwell
Turnaround	4 weeks from approval	2-3 weeks from approval	2 weeks from approval	2 weeks from approval
Warranty	3 months	11 year warranty (against colour fading)	1 year warranty	1 year warranty
Page	p14	p12	p10	p8



Precision Inlaid Logo Matting

For a superior, eye-catching finish and durable mat solution, then a bespoke precision inlay mat could be exactly what you need. Unlike a traditional ‘printed’ Logomat, precision inlaid mats are even suitable for busy entrances, meaning they not only look fabulous, but are functional too. Each component of the design is precision-cut from high quality polypropylene matting in the UK, using robotic technology. This ensures superb reproduction of even the most complex designs, in unbeatable time.

It’s possible to create matting of any size and shape with your logo positioned and scaled sympathetically to the overall design. We’re only limited by our imagination!

Service



With a turnaround promise of 2 weeks from approval of artwork (excluding delivery time) we are able to satisfy the needs of most businesses.



It is possible to expedite projects further should it be required – please speak to one of our advisors about your specific requirements.



Also, we expect to respond to all quote requests within 24 hours.

**“Our Reception has been recently refurbished and installing Logomat Precision has been the perfect finishing touch to make the building warm and welcoming. We are really impressed with the result and it adds personality to our entrance area.”**

*Thwaites*

Requirements



All we need to produce a design is your logo, the desired dimensions and whether it is to be placed in a matwell or laid to surface. Logos should ideally be supplied in vector format such as PDF, AI, EPS or similar. If you would like to supply a design then we’re equally happy to work from that, but it’s not necessary. We can even generate artwork from a trusty JPEG, but it may take us a little longer!

Process



Once we have received your logo and your order, a COBA Europe customer service representative will forward a digital proof of your bespoke mat for sign-off. Your approval begins the production process. We use the latest technology to produce crisp, clean lines with reliable accuracy.

Experienced production engineers methodically assemble and securely join each component to deliver a superior quality matting product.

Installation



If you opt for an edged mat then the installation is categorized as ‘loose lay’ and can be simply unpacked and put into action immediately. If your mat is being located in a recessed matwell, then once the old matting is removed, it also can simply be dropped into place. You may wish to use an adhesive to provide more robust positioning – but this is not essential.



Precision Nib



Black



Charcoal



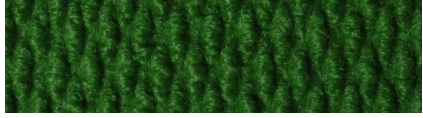
Grey



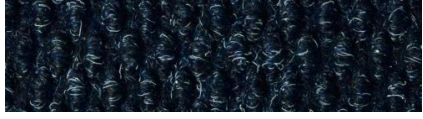
Dark Brown



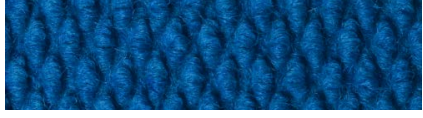
Dark Green



Apple Green



Navy Blue



Sky Blue



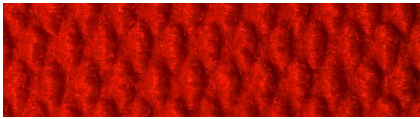
Baby Blue



Purple



Wine Red



Red



Pink



Golden Beige



Light Beige



Yellow



White



Orange

Precision Nib

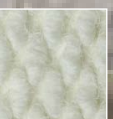
- High quality rugged matting material available in stunning colourways.
- Solution dyed polypropylene fibres for unbeatable resistance to wear, UV and staining.
- Ideal for use in logomat designs – choose from the 18 colours to recreate your design.
- Heavy weight pile and large nib design provides outstanding scrubbing action.
- Needle punch construction provides optimal crush resistance.
- Edges will not unravel or fray.
- Logomats made in Britain.
- Low installation cost.

“We opted for Logomat Precision because we have a high footfall to our pub and restaurant and durability was just as important as appearance. The finish is superb and a stunning reproduction of our much loved brand logo.”

*The Star Inn 1744*

Technical Specifications

Material	Polypropylene
Product Height	11mm +/- 10%
Product Weight	2950g/m² +/- 10%
Pile Height	5.5mm
Pile Weight	1790g/m²
Backing	Waffle
Flame retardancy	Efl
Product performance	Conforms to EN 14041
UV Resistance	Yes
Slip resistance	DS
Luxury Class	LC2
Country of Origin (Material)	Netherlands



2. Light

3. White





Black



Dark Grey



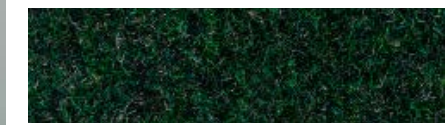
Charcoal



Light Grey



Dark Brown



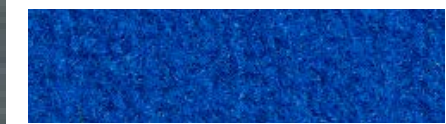
Dark Green



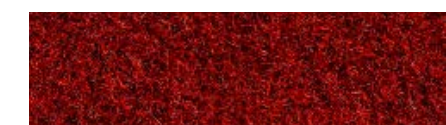
Apple Green



Blue



Sky Blue



Wine Red



Red



Light Brown



Orange



Yellow



White

## Precision Loop

- A popular material to produce inlay logomats with a smooth surface.
- Solution dyed polypropylene fibres for unbeatable resistance to wear, UV and staining.
- Ideal for use in logomat designs – choose from 15 colours to recreate your design.
- Heavy weight pile provides outstanding absorbing and wiping action.
- Needlefelt construction provides good crush resistance.
- Edges will not unravel or fray.
- Logomats made in Britain.
- Low installation cost.

“Having a professional logomat has improved the appearance of the whole club house.” *Market Harborough Football Club*

## Technical Specifications

Material	Polypropylene
Product Height	12.5mm +/- 10%
Product Weight	2760 g/m² +/- 10%
Pile Height	6mm
Pile Weight	1770 g/m²
Backing	Waffle
Flame retardancy	Efl
Product performance	Domestic 23, Areas with heavy use
Slip resistance	> 0.3 Machine direction > 0.3 Crossdirection
Luxury Class	LC2
Colour fastness to light	≥ 5
Colour fastness to rubbing, wet and dry	≥ 4
Colour fastness to water	≥ 4
Colour fastness to soiling	≥ 3
Dimensional stability	Shrinkage ≤ 1.2% Extension ≤ 0.5%
Electrostatic charging	< 2kV
Country of Origin (Material)	Netherlands





Logomat

- Customised quality printed doormat for individual logos or messages.
- Choose from 40 colours (maximum of six per mat).
- Logomat is a real performer in trapping dirt and moisture.
- Durable solution-dyed nylon surface tufted into a non-woven polyester.
- Soft carpet pile retains moisture, holding up to 2.5 litres water/m²
- 11 year warranty against fading.
- Standard sizes are machine washable for easy care.
- Pile material: nylon/polyester.
- Backing: anti-slip nitrile rubber.

Technical Specifications

Surface Finish:	Thermally bonded spunlaid non-woven bi-component filaments with a polyester core and nylon skin
Product Height:	7.5mm or 10mm
Product Weight:	4Kg/m²
Environmental Resistance:	Suitable for wet and dry environments. Indoor use only
UV Resistance:	Yes
Typical Applications:	Lobbies, hallways, entry areas and doorways
Installation Method:	Loose lay
Cleaning Method:	Hot water, no more than 40 degrees or launder at no more than 40 degrees
Flame Retardancy:	EN ISO 13501-1 Cfl - s1
Country of Origin:	UK



2-3 weeks



Mixed Colours

901	902	903	904	905
907	908	909		

Solid Colours

601	602	603	604	605
606	607	608	609	610
611	612	613	614	615
616	617	618	619	620
621	622	623	624	625
626	627	628	629	630
631	632	633	634	635
636	637	638	639	640
641	642	643	644	





# Promomat

- Mats are printed digitally for superb colour reproduction and definition.
- Achieve an all round brand experience at events by adding graphics on the floor.
- Ideal when large numbers of mats are needed.
- Don't let your product go unnoticed – the high quality colour reproduction is ideal for enhancing point of sale experiences.
- Extend your corporate identity through the whole building for seamless branding.
- Mats with your logo are also a great gift for clients and prospects.
- Cost effective addition to any range of promotional items – has been used to promote films, events and product launches.
- Design proof provided within 10 working days of order.
- Total turnaround time of no more than 4 weeks.
- Machine washable at 30°C.



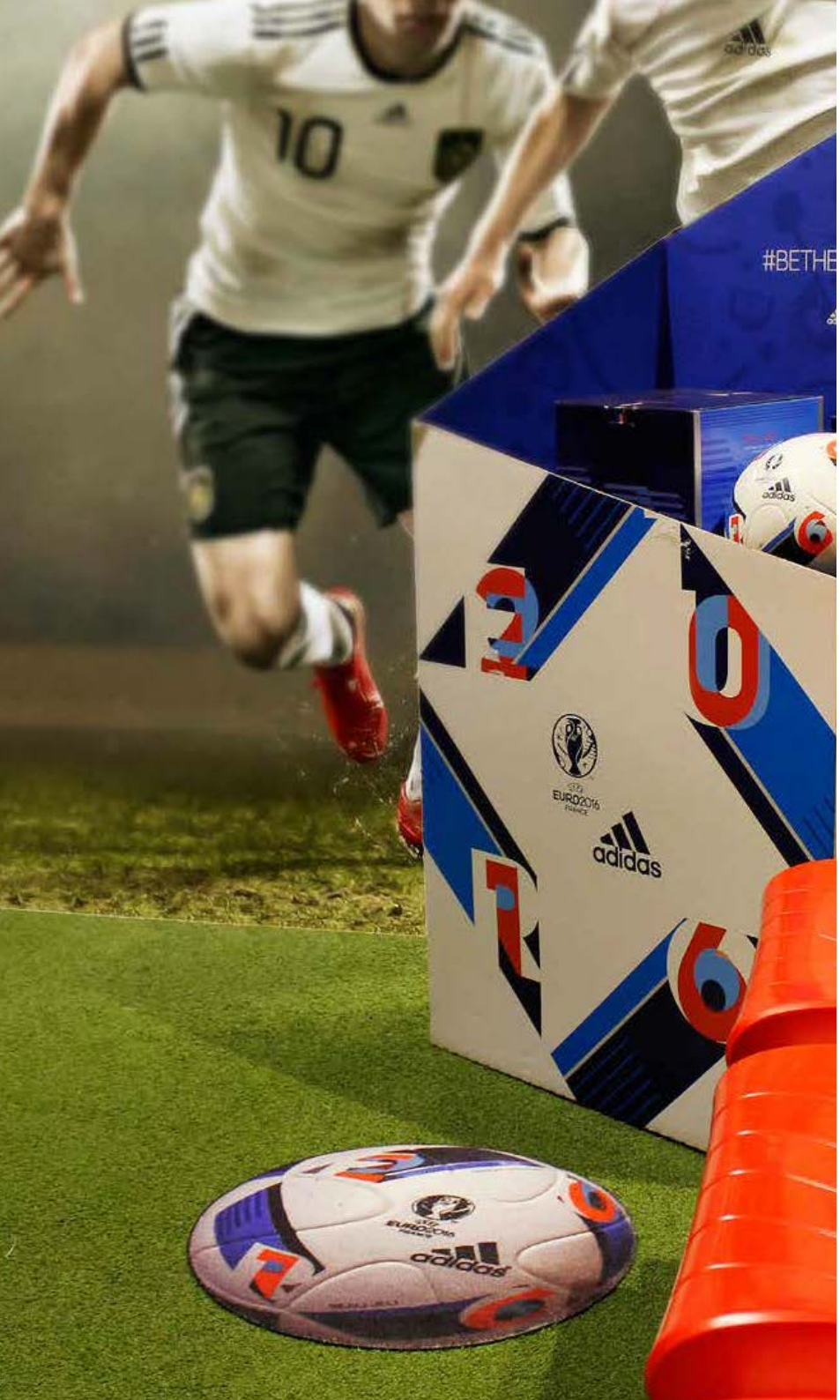
Because **Promomat** is printed digitally, virtually any design and colour can be reproduced - giving



max 4 weeks

## Technical Specifications

Material	Polyamide
Product Height	6mm
Product Weight	2,700 gr/m <sup>2</sup> (tolerance 100g/m <sup>2</sup> )
Pile Height	4mm
Tuft Density	189,000/m <sup>2</sup>
Surface Aspect	Velour
Backing	Vinyl
Manufacturing process	Tufting cut pile – digitally printed
Country of Origin	Belgium





## United Kingdom

### **Head Office and Distribution Centre**

Europark Industrial Estate  
A5 Watling Street  
Rugby, Warwickshire  
CV23 0AL

+44 (0)1788 228 555

[sales@cobaeeurope.com](mailto:sales@cobaeeurope.com)

[www.cobaeeurope.com](http://www.cobaeeurope.com)

## Germany

### **Office and Distribution Centre**

+49 (2161) 2945-0

[verkauf@cobaeeurope.de](mailto:verkauf@cobaeeurope.de)

[www.cobaeeurope.de](http://www.cobaeeurope.de)

## Slovakia

### **Office and Distribution Centre**

+421 41 507 11 12

[sales@cobaeeurope.sk](mailto:sales@cobaeeurope.sk)

[www.cobaeeurope.sk](http://www.cobaeeurope.sk)

## Poland

### **Office**

+48 698 498 484

[sales@cobaeeurope.pl](mailto:sales@cobaeeurope.pl)

[www.cobaeeurope.pl](http://www.cobaeeurope.pl)

## France

### **Office**

+33 (0)645309278

[sales@cobaeeurope.fr](mailto:sales@cobaeeurope.fr)

[www.cobaeeurope.fr](http://www.cobaeeurope.fr)

