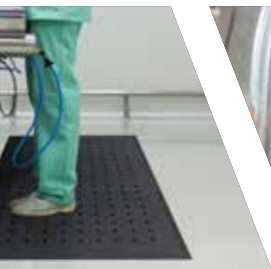
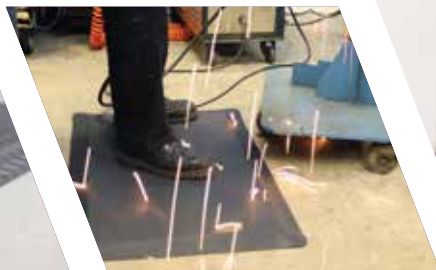


MORE THAN JUST
MATTING

COBA
europe



General Industrial
2019-20 Catalogue



People rightly expect to be able to carry out their work without being injured or made ill as a result. Yet, millions of employees across the world spend much of their working day on their feet, and this can have long lasting effects on health. Slips and trips are also still the biggest cause of workplace injury, and together, these two issues should be a fundamental priority for every business owner, health and safety professional, and HR team.

Our History

COBA has been providing effective, and innovative, matting and flooring solutions for 40 years. In this time, we have expanded and refined a range of quality products, suited to virtually any working environment.

Our Passion

Floor mats are an often-overlooked item, but if the right product is applied first time, the benefits can be felt further for years to come – from increased productivity through to reduced absenteeism and the prevention of future legal issues as a result of health problems.

Our Reach

As part of the international COBA group, which has localised facilities in the UK, Europe and South Africa, our customers have the reassurance that they are dealing with a professional, global name with a long-established heritage in the floor matting industry.

Service

Our experienced team of matting experts are free and available for site survey visits around the UK and Ireland. We will work with you to determine the best product solution for your environment, so that your investment is rewarded.

Solutions

Our product range offers an option for every budget and situation. It broadly spans anti-fatigue mats and non-slip mats flooring systems, ESD mats, electrical safety matting, and rubber sheeting.

Next Day Delivery

We are able to offer next day delivery on stock items – please request when placing your order. Standard delivery is 2-3 working days.



40 YEARS OF MATTING EXPERTISE

What We Do Differently



Free Sample
Service



Personal Customer
Service



Huge Stock
Holding



Localised
Supply



Next Day Delivery
Available



Distributor
Support



Global Reach
Local Service



Site Survey and
Installation Services

Contents

Workplace Mats

6-24

- o Foam mats
- o Dual layer foam mats
- o Interlocking tiles
- o Rubber mats
- o Lattice matting
- o Solid rolls

Electrical Safety

25-27

- o Cable Protectors
- o Switchboard Matting

Rubber Sheeting

28-29

ESD Mats & Accessories

30-34

Entrance Matting

35

10 NEW PRODUCTS INSIDE



THE ISSUES



Slips and Trips

Still the largest cause of accidents in the workplace, serious injury can occur in an instant. Effective entrance matting can reduce walked in dirt and moisture, greatly reducing risk. Non-slip accessories throughout the building then further protect you from this costly hazard.

Health and Wellbeing



An increasingly hot topic in recent years, the health and wellbeing of workers is not only important, but if properly managed can provide return value through reduced absenteeism and staff turnover.



MSD

In 2016, an estimated 8.8 million working days were lost due to work-related MSDs in Great Britain. An Absence and Workplace Health Survey conducted by the CBI/Pfizer in 2013, found that absenteeism in general is costing the **UK economy a staggering £14 billion a year.**

Hard concrete floors are considered the worst type of floor surface to stand on, and that is why many working environments now use anti-fatigue mats to cushion the impact.



Slips in the Workplace: Taking slips and trips seriously

Across Europe, slips in the workplace are a real concern. It's not just sprains and bruises. Slips all too frequently result in bone fractures or internal injuries of one sort or another. In the most extreme cases, slips can result in fatalities. Slipping is especially dangerous if the individual falls onto a sharp or moving object, falls from height or comes into contact with hot surfaces, or chemicals.

What are the causes?

Contaminants on floor surfaces are very often the culprit. This can be water, ice, oil, grease, chemical spillage, etc. It is not just spilt liquids that make floor surfaces dangerous. Swarf, powders and other dry debris can act like marbles on a floor surface. Uneven and poorly maintained floor surfaces can also cause both slips and trips.

What can be done?

Good house-keeping is essential and educating employees about risks is imperative. Ensuring that floors are regularly cleaned and maintained, so they are free of contaminants should help to reduce the risk of slipping significantly. Use cable protectors for trailing wires. Floor safety should be evaluated frequently, with regular risk assessments.

The Health & Safety Executive provides useful guidance for risk assessments and also offers a Slips Assessment Tool (SAT). Carefully consider any risks. Initiating preventative measures, such as the installation of anti-slip matting, flooring or coating can dramatically improve safety underfoot. Ensure the area is well lit.

Did you know?

Slips, trips and falls on the same level remain the most common cause of non-fatal accident in the UK workplace, and many result in major injury and human suffering. 90% of all reported 'specified' non-fatal injuries under RIDDOR resulted in fractures. The Labour Force Survey estimates that there were 555,000 non-fatal self-reported injuries to workers in the UK during 2017/18, of which some 135,000 resulted in over 7 days absence.³

High risk sectors

Healthcare; Education; Food & Drink Manufacture; Catering & Hospitality; Manufacturing/Engineering (General); Building & Plant Maintenance; Oil & Gas Industries; Shipping & Docks; and Construction are all considered as high risk slip sectors.

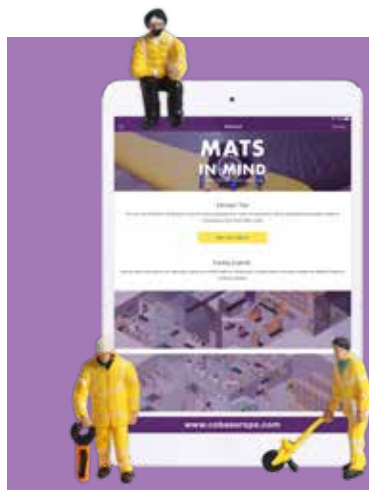
£30.1K

estimated *Cost to Society* (Britain per case) based on a non-fatal workplace injury resulting in 7 or more days absence²

31%

of reported non-fatal injuries in Great Britain during 2017-18 were accounted to slip, trips and falls on the same level¹

¹Source RIDDOR, Reporting of Injuries, Diseases and Dangerous Occurrences Regulations ²Source HSE Cost Model Great Britain 2016/17 ³Source The Labour Force Survey 2018/18



Select the right matting product

Choose the right matting product each time with **Mats in Mind**, our ultimate product selector app.

Download Mats in Mind FREE today on the Apple or Android app stores!



Workplace Matting Selector

| | | Comfort Factor | Wear Rating | Slip Rating | Suitable for Wet Environments | Suitable for Oily Environments | Fire Tested | Suitable for High Voltage Environments | Static Dissipative | |
|------------------------|---------------------------------------|----------------|-------------|-------------|-------------------------------|--------------------------------|-------------|--|--------------------|-----|
| | | | | | | | | | | |
| Dry Environments | Benchstat | | ... | | | | | | ✓ | 32 |
| | ESD Rubber Mats | | ... | ... | | | | | ✓ | 35 |
| | COBAdot | . | ... | ... | | | | | | 28 |
| | Solid Vinyl | . | ... | ... | | | | | | 27 |
| | HR Matting | . | | . | | | | | ✓ | 32 |
| | COBASwitch BS EN: 61111 | . | | .. | | | | ✓ | | 25 |
| | COBASwitch | . | | | | | | ✓ | | 25 |
| | COBASwitch VDE | . | | | | | | ✓ | | 25 |
| | Orthomat® Lite | ... | ... | .. | | | ✓ | | | 6 |
| | Orthomat® Standard/Ribbed/Diamond/Dot | ... | ... | .. | | | ✓ | | | 6-7 |
| | COBAstat | ... | ... | .. | | | | | ✓ | 30 |
| | Bubblemat / Bubblemat Connect | ... | | ... | | | | | | 20 |
| | Orthomat® Comfort Plus | | | | | | | | | 8 |
| | Orthomat® Ultimate | ... | | ... | | ✓ | ✓ | | | 9 |
| | Orthomat® Premium | | | .. | | | | | | 9 |
| | Diamond Tread | | | ... | | | ✓ | | | 12 |
| | Fluted Anti-Fatigue | | | ... | | | | | | 11 |
| | Marble Anti-Fatigue | | | .. | | | | | | 12 |
| | Senso Dial | | | ... | | | | | | 12 |
| | Senso Dial ESD | | | ... | | | | | ✓ | 31 |
| | Orthomat® Office | | | ... | | | | | | 6 |
| | Deckplate / Deckplate Connect | | | ... | | | | | | 10 |
| | Deckplate Anti-Static | | | ... | | | | | ✓ | 31 |
| | COBAelite® Bubble | | | | | | ✓ | | | 13 |
| | COBAelite® Diamond | | | | | | | | | 10 |
| | COBAelite® ESD | | | | | | | | ✓ | 30 |
| Wet & Dry Environments | COBAScrape | . | ... | | ✓ | ✓ | | | | 18 |
| | Work Deck | . | | .. | ✓ | | | | | 22 |
| | DeckStep | .. | | | ✓ | ✓ | | | | 23 |
| | Unimat | .. | | | ✓ | | | | | 18 |
| | COBAmat® | .. | | | ✓ | ✓ | ✓ | | | 21 |
| | COBAmat® Workstation | .. | | | ✓ | ✓ | ✓ | | | 22 |
| | Comfort-Lok | ... | ... | ... | ✓ | ✓ | | | | 20 |
| | Rampmat | ... | | | ✓ | | | | | 19 |
| | High-Duty | ... | | | ✓ | ✓ | | | | 19 |
| | High-Duty Grit | ... | | | ✓ | ✓ | | | | 19 |
| | K-Mat | ... | | | ✓ | ✓ | | | | 18 |
| | Worksafe | ... | | | ✓ | | | | | 21 |
| | Solid Fatigue-Step | | | | ✓ | ✓ | | | | 16 |
| | Fatigue-Step | | | | ✓ | | | | | 16 |
| | Fatigue-Step Grit Top | | | | ✓ | ✓ | | | | 16 |
| | Hygimat | | | | ✓ | ✓ | | | | 14 |
| | COBAeluxe | | | | ✓ | | | | | 21 |
| | Tough Deck | ... | | | ✓ | | | | | 15 |
| | Fatigue Lock | | | | ✓ | | | | | 17 |

Orthomat®

The original fatigue fighter

Our research and knowledge in the field of 'fatigue-relief' for standing occupations continues to drive the development of our Orthomat® range.

COBA Europe is regarded as one of the leading names in anti-fatigue matting, offering an unrivalled product choice. Our Orthomat® range has been specifically designed to reduce the onset of fatigue caused by prolonged standing. This durable, yet very comfortable matting is manufactured from 100% closed cell PVC foam, providing the right balance of underfoot cushioning and support, while encouraging healthy circulation. Browse our extensive selection of Orthomat® products to find the ideal anti-fatigue matting for your environment. Our Sales team is always happy to advise on the most suitable product.



Orthomat® Office The anti-fatigue mat for office workers

Improves overall posture and wellbeing when standing in static positions. • Provides just the right balance between cushioning and foot support for users of sit/standing desks. • Helps to delay the onset of pain and tiredness otherwise experienced from standing on hard or firm floor surfaces. • Textured underside keeps this anti-fatigue mat in place. • Gentle bevelled edges to reduce trip hazards, while creating a neat 'anti-curl' finish that sits flush to the floor. • Product Height: 16 mm



| Size | Black |
|---------------|----------|
| 0.5 m x 0.8 m | OO010001 |

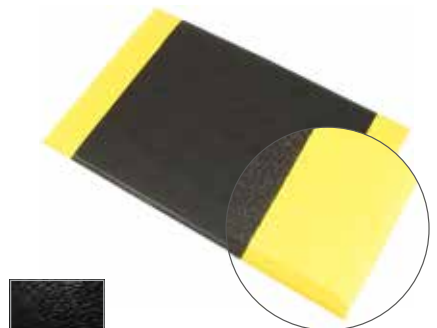


Orthomat® Lite Improve worker comfort with our entry level foam anti-fatigue mat

Cost effective anti-fatigue matting for when price is important, or traffic is light. • Provides relief from fatigue caused by standing at work. • Insulates workers against cold concrete floors. • Ideal for light to medium use in dry industrial environments. • Lightweight, so easy to transport and reposition. • Product Height: 6 mm



| Sizes | Black |
|--------------------------|-----------|
| 0.9 m x 36.5 m | CV010001 |
| 0.9 m x per linear metre | CV010001C |
| 0.9 m x 1.5 m | CV010002 |
| 0.9 m x 2 m | CV010003 |
| 0.9 m x 3 m | CV010004 |
| 0.9 m x 1.82 m | CV010005 |
| 0.9 m x 0.76 m | CV010006 |



Orthomat® Standard Quickly tackle standing fatigue in dry workplaces

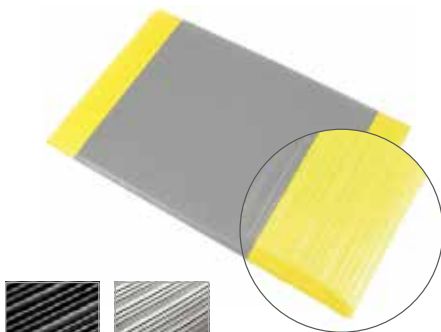
Versatile single layer foam anti-fatigue mat. • Insulates standing workers against the effects of cold concrete floors. • Lightweight, so easy to transport and reposition. • Best suited to dry environments. • Product Height: 9.5 mm



| Sizes | Black | Grey | Black/Yellow |
|--------------------------|-----------|-----------|--------------|
| 0.6 m x 0.9 m | AF010001 | AF060001 | AF010701 |
| 0.9 m x 1.5 m | AF010002 | AF060002 | AF010702 |
| 0.9 m x 18.3 m | AF010003 | AF060003 | AF010703 |
| 0.9 m x per linear metre | AF010003C | AF060003C | AF010703C |
| 1.2 m x 18.3 m | AF010005 | - | AF010706 |
| 1.2 m x per linear metre | AF010005C | - | AF010706C |

Orthomat® Dot Simple but effective workplace mat

Single layer foam anti-fatigue mat. • Dot pattern surface for more grip, reduces slip risk. • Insulates standing workers against the effects of cold concrete floors. • Lightweight, so easy to transport and reposition. • Product Height: 9.5 mm



Orthomat® Ribbed

Versatile single layer foam anti-fatigue mat. • Insulates standing workers against the effects of cold concrete floors. • Lightweight, so easy to transport and reposition. • Best suited to dry environments. • Product Height: 9.5 mm



| Sizes | Black | Grey | Grey/Yellow |
|--------------------------|-----------|-----------|-------------|
| 0.6 m x 0.9 m | AL010001 | AL060001 | AL060701 |
| 0.9 m x 1.5 m | AL010002 | AL060002 | AL060702 |
| 0.6 m x 18.3 m | AL010006 | AL060004 | - |
| 0.6 m x per linear metre | AL010004C | AL060004C | - |
| 0.9 m x 18.3 m | AL010003 | AL060003 | AL060703 |
| 0.9 m x per linear metre | AL010003C | AL060003C | AL060703C |
| 1.2 m x 18.3 m | AL010004 | AL060005 | AL060704 |
| 1.2 m x per linear metre | AL010006C | AL060005C | AL060704C |

| Sizes | Black | Black/Yellow |
|--------------------------|-----------|--------------|
| 0.6 m x 0.9 m | AD010001 | AD010701 |
| 0.9 m x 1.5 m | AD010002 | AD010702 |
| 0.9 m x 18.3 m | AD010003 | AD010703 |
| 0.9 m x per linear metre | AD010003C | AD010703C |
| 1.2 m x 18.3 m | AD010005 | AD010705 |
| 1.2 m x per linear metre | AD010005C | AD010705C |



Orthomat® Diamond

Versatile single layer foam anti-fatigue mat. • Insulates standing workers against the effects of cold concrete floors. • Lightweight, so easy to transport and reposition. • Best suited to dry environments. • Product Height: 9.5 mm



| Sizes | Black/Yellow | Black |
|--------------------------|--------------|------------|
| 0.6 m x 0.9 m | DAF010701 | DAF010001 |
| 0.9 m x 1.5 m | DAF010702 | DAF010002 |
| 0.9 m x 18.3 m | DAF010703 | DAF010003 |
| 0.9 m x per linear metre | DAF010703C | DAF010003C |
| 1.2 m x 18.3 m | DAF010705 | DAF010005 |
| 1.2 m x per linear metre | DAF010705C | DAF010005C |



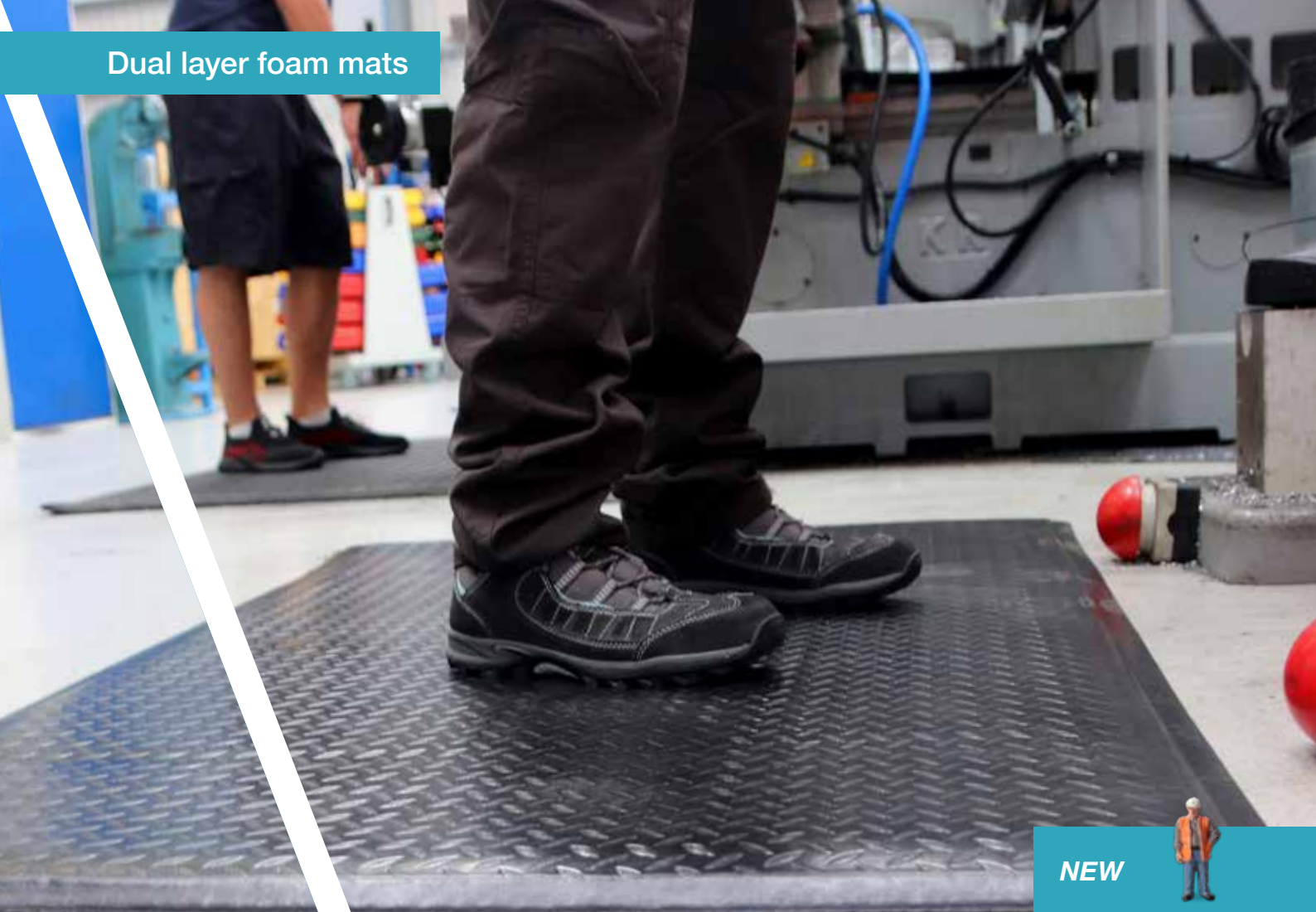
Black/Yellow



Black



Dual layer foam mats



NEW



Orthomat® Comfort Plus

Thicker foam anti-fatigue mat for dry workplaces

A thicker, single layer foam anti-fatigue mat for maximum levels of comfort. • Insulates against cold concrete floors. • Best suited to dry environments. • Ideal for light or moderate industrial use. • Checkerplate surface provides attractive appearance. • Available in mats and rolls. • Fire tested to BS EN 13501-1. • Material: Open Cell PVC (Foam) • Product Height: 15 mm

Sizes

| | Black |
|--------------------------|------------|
| 0.6 m x 0.9 m | OCP010001 |
| 0.9 m x 1.5 m | OCP010002 |
| 0.9 m x 1.83 m | OCP0100003 |
| 0.9 m x per linear metre | OCP010003C |
| 1.2 m x 18.3 m | OCP010006 |
| 1.2 m x per linear metre | OCP010006C |





Orthomat® Premium

Reduces standing fatigue for those that move at work

Exceptional fatigue-relief properties – a real investment for the workplace. • Dual layer construction for superior comfort and durability. • Tough textured top surface for excellent resilience against wear and tear. • Insulates against the effects of cold concrete floors. • Low density under layer provides extremely effective underfoot cushioning. • Ideal for demanding locations, especially where regular turning is involved. • Tapered edges to reduce trip hazards. • Range of colours available. • Fire tested to BS EN 13501-1. • Material: Open Cell PVC (Foam) • Product Height: 12.5 mm



Black



Blue



Green



| Sizes | Black | Blue | Green |
|--------------------------|-----------|-----------|-----------|
| 0.6 m x 0.9 m | FF010001 | - | - |
| 0.9 m x 1.5 m | FF010002 | - | - |
| 0.9 m x 18.3 m | FF010003 | FF020003 | FF040003 |
| 0.9 m x per linear metre | FF010003C | FF020003C | FF040003C |
| 0.9 m x 3.65 m | FF010004 | - | - |
| 0.6 m x 18.3 m | FF010005 | - | - |
| 0.6 m x per linear metre | FF010005C | - | - |
| 1.2 m x 18.3 m | FF010006 | - | FF040005 |
| 1.2 m x per linear metre | FF010006C | - | - |

Orthomat® Ultimate

The ultimate foam mat to reduce fatigue - do your worst!

When you need the lightness of foam but the resilience of a nitrile mat. • Soft inner layer cushions impact from standing to reduce fatigue or discomfort. • Unique outer layer encapsulates entire mat to prevent moisture ingress. • Edges are heat sealed for outstanding durability. • High density composition gives extra support and shape recovery. • Ramped edges limit trip risk. • Textured surface provides traction and captures some dirt and swarf. • Fire tested to BS EN 13501-1. • Material: Open Cell PVC (Foam) with PolyNit outer (fusion bonded, not glued) • Product Height: 15 mm



| Sizes | Black |
|--|-----------|
| 0.6 m x 0.9 m | OU010001 |
| 0.9 m x 1.5 m | OU010002 |
| 0.9 m x 18.3 m | OU010003 |
| 0.9 m x per linear metre (max. 18.3 m) | OU010003C |



PolyNit®

*Unique to COBA Europe,
a blended material for
outstanding durability.*



NEW

COBAelite® Diamond

Durable anti-fatigue mat with diamond pattern

Improve comfort when standing in the workplace. • Premium quality 'diamond' surface anti-fatigue mat. • Superior material ensures durability. • Ramped edges help avoid creating a trip risk. • Supplied with high visibility yellow borders as standard. • Loose lay – can easily be installed in a wide array of workplaces. • Supplied as individual workstation mats. • Material: PU • Product Height: 18 mm

| Sizes | Black/Yellow | Weight |
|---------------|--------------|--------|
| 0.6 m x 0.9 m | SED010701 | 2 kg |
| 0.9 m x 1.2 m | SED010702 | 3 kg |





Deckplate Connect

Interlocking dual-layer anti-fatigue mat

Highly durable workplace matting with excellent anti-fatigue properties.

- Interlocking tile modules designed to cover unusual or large floor areas.
- Simply connect mats together in any configuration to create a seamless anti-fatigue surface.
- Surface structure provides good anti-slip protection.
- Comfortable foam 'cushion' backing for fatigue relief.
- Ramped edges reduce the risk of trips.
- Product Height: 15 mm



| Sizes | Black |
|------------------------|----------|
| 50 cm x 50 cm (Middle) | DP010008 |
| 50 cm x 50 cm (End) | DP010009 |
| 50 cm x 50 cm (Corner) | DP010010 |



New
Deckplate Anti-Static
now available!
Page 31

Deckplate

Fatigue relief in demanding environments

Reduce standing fatigue for workers in industry. • Dual layer mat provides balance of comfort and wear resistance. • Hardwearing top surface ensures a long life in normal use. • Checker plate style design suits industrial environments. • Self-extinguishing top surface (tested to BS EN 13501-1) provides resilience to many industrial chemicals. • Product Height: 15 mm



| Sizes | Black | Black/Yellow |
|--------------------------|-----------|--------------|
| 0.6 m x 0.9 m | DP010609 | SD010701 |
| 0.6 m x 18.3 m | - | SD010706 |
| 0.6 m x per linear metre | - | SD010706C |
| 0.9 m x 1.5 m | DP010915 | SD010702 |
| 0.9 m x 3 m | DP010903 | SD010703 |
| 0.9 m x 6 m | DP010906 | SD010704 |
| 0.9 m x 18.3 m | DP010005 | SD010707 |
| 0.9 m x per linear metre | DP010005C | SD010707C |
| 1.2 m x 18.3 m | DP010007 | SD010708 |
| 1.2 m x per linear metre | DP010007C | SD010708C |
| 1.5 m x 15 m | DP010011 | SD010709 |
| 1.5 m x per linear metre | DP010011C | SD010709C |



Dual layer foam mats



Diamond Tread

Fatigue relief for welding professionals

Welders need relief from standing like any other professional. • The heavy-duty top surface is both resilient and fire tested, whilst the soft foam underlayer provides cushioning for the feet. • Ideal for welding bays and demanding industrial use. • Flame retardant top surface (tested to BS EN 13501-1) – so weld sparks aren't an issue. • Loose lay – can be moved easily. • Bevelled edges help avoid creating a trip risk. • Product Height: 15 mm



Sizes

| Sizes | Black |
|--------------------------|------------|
| 0.6 m x 0.9 m | DTB010001 |
| 0.9 m x 1.5 m | DTB010002 |
| 0.9 m x 18.3 m | DTB010003 |
| 0.9 m x per linear metre | DTB010003C |



Marble Anti-Fatigue

Anti-fatigue matting when appearance is important

Marble design helps blend in to an array of interior styles. • Ideal for locations where looks matter such as hair salons, beauty counters or retail. • Plush foam backing offers relief from standing all day. • Hardwearing top surface ensures long life with normal use. • Capable of withstanding industrial applications. • Product Height: 15 mm



Sizes

| Sizes | Black |
|--------------------------|-----------|
| 0.6 m x 0.9 m | MT010001 |
| 0.9 m x 1.5 m | MT010002 |
| 0.9 m x 3 m | MT010004 |
| 0.9 m x per linear metre | MT010003C |
| 0.9 m x 18.3 m | MT010003 |



Fluted Anti-Fatigue

Simple and durable anti-fatigue mat

Dual layer anti-fatigue mat combining soft foam backing with durable anti-slip surface. • Ribbed surface helps to provide a firmer footing. • 'Cushion' foam backing provides comfort underfoot. • Ramped edges reduce the risk of tripping and allow easy trolley access. • Available as single workstation mats or in rolls. • Product Height: 12.5 mm



Sizes

| Sizes | Black |
|--------------------------|-----------|
| 0.6 m x 0.9 m | FA010001 |
| 0.9 m x 1.5 m | FA010002 |
| 0.9 m x 3 m | FA010003 |
| 0.9 m x 15.3 m | FA010004 |
| 0.9 m x per linear metre | FA010004C |



Senso Dial

An anti-fatigue mat for static-sensitive workplaces

ESD anti-fatigue mat with excellent all-round safety features. • Foam backing provides fatigue-relief. • Rubber top surface is effective in reducing slip risk. • Hardwearing and resistant to oil spillage. • Measured according to IEC 61340-5-1. • Ramped edges. • Product Height: 10 mm



Sizes

Black

| | |
|------------------------------------|-----------|
| 1 m x 10 m | SN010002 |
| 1 m x per linear metre | SN010002C |
| 1.2 m x 10 m | SN010003 |
| 1.2 m x per linear metre | SN010003C |
| 0.6 m x 1 m | SN010004 |
| 1 m x 1.5 m | SN010005 |
| Special sizes available on request | SD1 |



Dual layer foam mats



COBAelite® Bubble

Excellent fatigue relief with superior resilience

Improve comfort when standing in the workplace. • Raised surface stimulates blood circulation and foot movement. • Superior material ensures durability. • Ramped edges help avoid creating a trip risk. • Loose lay – can easily be installed in a wide array of workplaces. • Product Height: 15 mm



Sizes

Black

| | |
|---------------|----------|
| 0.6 m x 0.9 m | SE010001 |
| 0.9 m x 1.2 m | SE010003 |
| Special size | SE010010 |



Dual layer foam mats



NEW

Hygimat

A revolutionary hygienic anti-fatigue mat

Improve feeling of comfort and energy whilst standing at work. • Ideal for any workplace where hygiene is important e.g. healthcare, food manufacturing, catering, hospitality, clean rooms or food retail. • Made from a revolutionary 'gel foam' material that combines the best in durability and comfort. • Material also has anti-microbial properties • Closed cell construction means that no liquids can penetrate the mat and reduce performance. • Version with holes is ideal for wet workplaces in need of drainage. • Oil resistant. • Easily cleaned – can be cleaned with detergent or can be steam sterilised. • Fire tested to BS EN 13501-1 and slip tested to DIN 51130. • Material: Rubberised Gel Foam • Product Height: 17 mm \pm 1 mm



Sizes

| | |
|-------------------------------|-----------|
| 0.6 m x 0.9 m (Solid surface) | HYS010001 |
| 0.9 m x 1.5 m (Solid surface) | HYS010002 |
| 0.9 m x 1.8 m (Solid surface) | HYS010003 |
| 0.6 m x 0.9 m (With holes) | HYG010001 |
| 0.9 m x 1.5 m (With holes) | HYG010002 |
| 0.9 m x 1.8 m (With holes) | HYG010003 |

Black





Tough Deck

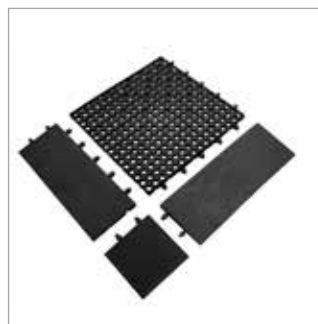
Recycled drainable workplace tiles

Non-slip interlocking decking for wet areas. • Combination of substantial product height and large holes offers excellent drainage. • An economical yet heavy-duty matting solution. • Easy DIY installation with connectors that conceal joins. • Ideal for industrial use, especially in areas prone to liquid spillage. • Ramped edges to prevent trips are available in black or yellow. • Slip tested to DIN 51130. • Material: Recycled rubber and plastic • Product Height: 20 mm



Edging

| | Black | Yellow |
|------------------------------------|------------|------------|
| Corner Edge (Pack of 4) | TDC010001 | TDC070001C |
| Female Ramped Edge 0.48 m x 0.18 m | TDE010001F | TDE070001F |
| Male Ramped Edge 0.48 m x 0.18 m | TDE010001M | TDE070001M |



Interlocking tiles



Solid Fatigue-Step

Fatigue relief for large and oil prone shop floors

Tiles link together to provide a very comfortable anti-fatigue surface. Can withstand temperatures of up to 160°C and spillage of molten glass. • Individual tiles can be moved and replaced with ease. • Fully slip tested – see datasheet for details. • Main tiles available in two options:- • Standard • Nitrile / B1 • Nitrile option has excellent resistance to oils, chemicals and grease. • B1 version tested to BS EN 13501 – see datasheet for details. • Product Height: 18 mm



| Tile Size | Black | B1 Nitrile |
|---------------|----------|------------|
| 0.9 m x 0.9 m | ST010001 | ST010001B1 |



Fatigue-Step

Fatigue relief for large, wet and oily shop floors

Tiles link together to provide an anti-fatigue surface for particularly wet or oily areas. Soft, yet resilient rubber floor tiles. Open holes allow efficient drainage of spilt liquids. • Effective anti-fatigue properties for prolonged standing. • Main tiles available in two options: • Standard • Nitrile • Nitrile option has excellent resistance to oils, chemicals and grease. • Product Height: 18 mm



| Tile Size | Black | Nitrile |
|---------------|----------|----------|
| 0.9 m x 0.9 m | SS010001 | SS010007 |



Fatigue-Step Grit Top

Fatigue relief with superior slip resistance

'Grit' top surface provides exceptional grip even in oily conditions. • Extremely robust interlocking tiles for heavy-duty use. • Open holes allow efficient drainage of spilt liquids. • Provides high levels of comfort underfoot to relieve fatigue. • Made from nitrile for excellent resistance to oils and chemicals. • Slip tested to DIN 51130. • Product Height: 18 mm



| Tile Size | Black |
|---------------|-----------|
| 0.9 m x 0.9 m | SS010001G |



| Fatigue-Step Edging | Black | Yellow |
|----------------------------|------------|-------------|
| Female Corner Edge | SS010002F | SS070002F |
| Male Corner Edge | SS010002M | SS070002M |
| Female Corner Edge Nitrile | SS010002FN | SS070002FN |
| Male Corner Edge Nitrile | SS010002MN | SS070002MN |
| Female Corner Edge B1 | - | SS070002B1F |
| Male Corner Edge B1 | - | SS070002B1M |



Fatigue Lock

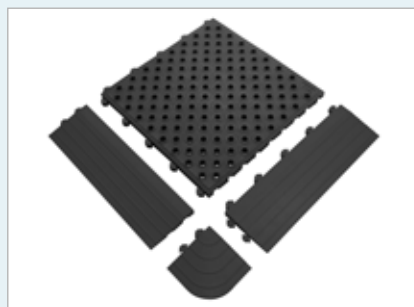
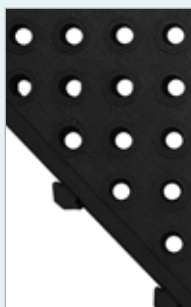
Premium mid-size interlocking anti-fatigue tile

This extra thick tile provides comfort and fatigue relief for standing workers. • Precision designed tiles seamlessly clip together for smooth raised floor surface. • Convenient tile size allows for easy planning. • Can be used to cover large or unusually shaped workstations. • Made from rubber for durability, slip, and impact resistance. • Tile option with holes is ideal for wet workplaces in need of drainage. • Solid and holed version can be used together in one installation. • Material: Rubber, including 25% NBR • Product Height: 24 mm



| Tile Size | Black | Weight |
|-------------------------------|-----------|--------|
| 0.5 m x 0.5 m (Solid surface) | FLS010001 | 2.9kg |
| 0.5 m x 0.5 m (With holes) | FL010001 | 2.8kg |

| Edging | Black | Yellow | Weight |
|-------------|------------|------------|---------|
| Corner Edge | FLC010003 | FLC070003 | 0.2 kg |
| Male Edge | FLE010002M | FLE070002M | 0.65 kg |
| Female Edge | FLE010002F | FLE070002F | 0.65 kg |



Rubber Mats



K-Mat

Reduce fatigue and slips in oil prone areas

A nitrile rubber mat for swarf prone areas. • Contains nitrile to offer the best resistance to oils and chemicals. • Ideal for food processing and manufacturing locations due to its excellent resistance to grease, fats and detergents. • Easily cleaned in a commercial washing machine. • Raised pattern surface for exceptional slip-resistance (tested to DIN 51130). • Open holes efficiently drain liquids and capture debris. • Hygienic anti-microbial properties make it suitable for food processing locations. • Material: NBR • Product Height: 9 mm



Size

0.85 m x 1.5 m

Part Code

KM010001



COBAScrape

A durable anti-slip mat ideal for areas prone to oil or chemical spillage

A solid surface mat designed to reduce slips in oily or greasy conditions. • Raised surface pattern provides extra underfoot grip. • Recessed pattern creates drainage channels to capture liquids. • Makes standing more comfortable in a wide range of workplace environments. • Resilient to degradation in oily, greasy and chemical prone areas for a longer lifespan. • Single mat design makes it a quick and simple solution to reducing slip accidents. • Bevelled edges as standard to reduce trip hazards. • Slip tested to DIN 51130. • Product Height: 6 mm



Sizes

0.85 m x 0.75 m

0.85 m x 1.5 m

0.85 m x 3 m

1.15 m x 1.75 m

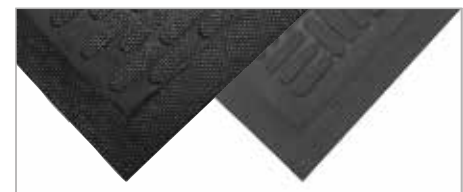
Part Code

CS010001

CS010002

CS010003

CS010004



Unimat

Heavy-duty anti-fatigue matting for wet areas

Versatile rubber runner. • Open holes provide excellent drainage. • A real asset in helping to prevent slipping in wet/oily areas. • Easy to roll up and move to new locations or for cleaning. • Slip tested to DIN 51130. • Product Height: 10 mm



Sizes

1 m x 5 m

1 m x 10 m

Part Code

UM010001

UM010002

Rampmat

Banish cold hard concrete floors with our entry level rubber anti-fatigue mat

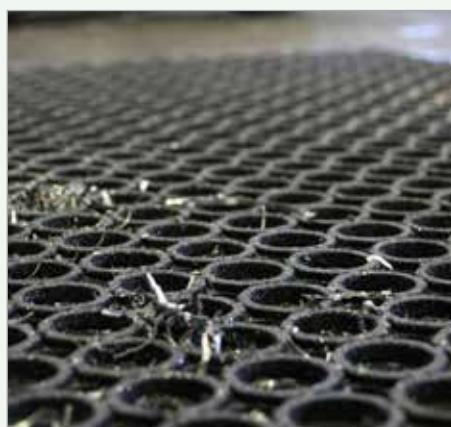
Provide standing relief to all workers with this economical anti-fatigue mat. • Raised circular surface provides effective slip resistance. • Open drainage holes capture spilt liquids, swarf or other debris to help prevent slips. • Moulded ramped edges to reduce the risk of trips and allow wheeled access. • Made from hardwearing rubber for durability. • Slip tested to DIN 51130. • Product Height: 14 mm



| Sizes | Black |
|---------------|----------|
| 0.9 m x 1.5 m | RP010001 |
| 0.8 m x 1.2 m | RP010002 |



| Size | Part Code | | | | |
|---------------|-----------|----------|----------|----------|----------|
| 0.9 m x 1.5 m | HI010001 | HI010002 | HI010003 | HI010004 | HI010005 |



| Size | Black |
|---------------|-----------|
| 0.9 m x 1.5 m | HI010001G |



High-Duty

Reduce standing fatigue at larger or oily workstations

A very comfortable alternative to cold hard floors. • Open holes capture spilt liquids and swarf. • Manufactured from a blend of rubber for better than average resistance to oil and chemicals. • Available in standard mats, edged on all sides, or as interlocking modules for larger areas. • Raised circular surface gives excellent underfoot grip. • Slip tested to DIN 51130. • Product Height: 12 mm

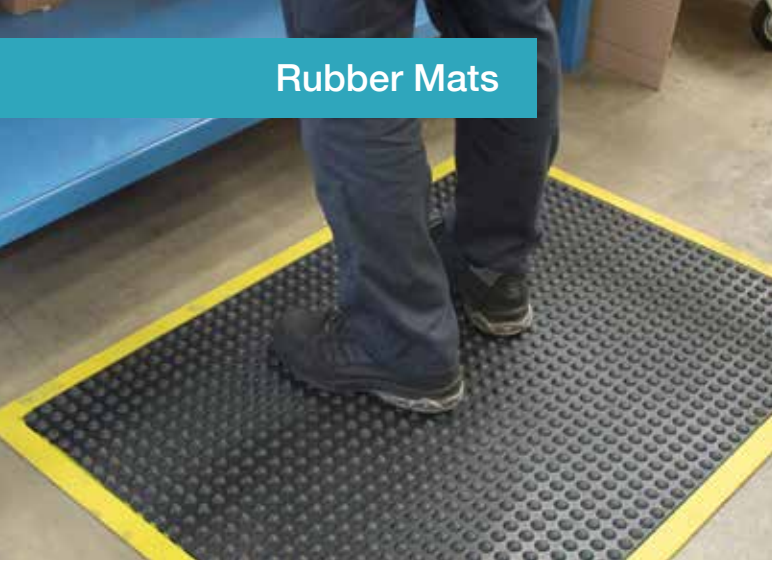


High-Duty Grit

Reduce slips and standing fatigue in one

Provides both slip-resistance and fatigue-relief. • 'Grit' coating and raised surface pattern combine for highly effective slip resistance. • Material composition means it is highly resistant to chemicals, oils and grease. • Provides fatigue-relief from cold hard floors. • Ideal for demanding locations such as engineering workshops. • Moulded bevelled edges reduce trip hazards. • Product Height: 13 mm

Rubber Mats



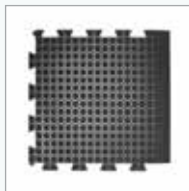
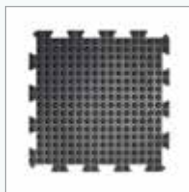
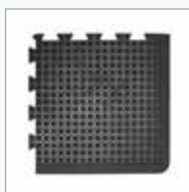
Bubblemat

Smart anti-fatigue mat with a distinctive bubbled surface

Raised bubble patterned surface stimulates feet and legs to aid circulation. Underfoot cushioning also makes prolonged occupational standing more comfortable. A choice of materials depending on the demands of the environment (dry use only). • Complete mats suitable for workstations and interlocking sections available for longer production lines. • Product Height: 14 mm



| Sizes | Black | Nitrile |
|---|----------|-----------|
| 0.6 m x 0.9 m (edged all round) | BF010001 | BF010001N |
| 0.9 m x 1.2 m (edged all round) | BF010002 | BF010002N |
| 0.6 m x 0.9 m (interlocking end piece) | BF010003 | BF010003N |
| 0.6 m x 0.9 m (interlocking middle piece) | BF010004 | BF010004N |
| Sizes | Safety | |
| 0.6 m x 0.9 m (edged all round) | BF010701 | |
| 0.9 m x 1.2 m (edged all round) | BF010702 | |
| 0.6 m x 0.9 m (interlocking end piece) | BF010703 | |
| 0.6 m x 0.9 m (interlocking middle piece) | BF010704 | |
| 0.9 m x 1.2 m (interlocking end piece) | BF010705 | |
| 0.9 m x 1.2 m (interlocking middle piece) | BF010706 | |



Bubblemat Connect

Interlocking tiles with high anti-fatigue properties

Durable anti-fatigue matting system. • Raised bubbled surface to stimulate blood circulation and reduction of fatigue. • Interlocking system provides flexibility in the type of shape that can be created. • Product Height: 13.5 mm

| Sizes | Black | Safety |
|------------------------|----------|----------|
| 50 cm x 50 cm (Middle) | BF010007 | - |
| 50 cm x 50 cm (End) | BF010008 | BF010708 |
| 50 cm x 50 cm (Corner) | BF010009 | BF010709 |



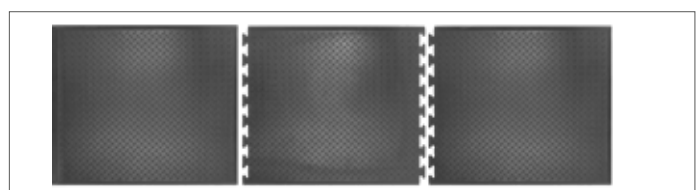
Comfort-Lok

Fatigue relief for standing workers on production lines or benches

Heavy-duty rubber mats provide a comfortable standing surface for operatives. • Available as interlocking modules for long runs, or as a single workstation mat. • Resistant to oil and grease making it ideal for food production areas or in any catering business. • Diamond patterned surface provides underfoot grip. • Hardwearing rubber ensures a long life in normal use. • Suitable for high temperature environments. • Slip tested to DIN 51130. • Product Height: 12 mm



| Sizes | Part Code |
|---|-----------|
| 0.7 m x 0.8 m (edged all round) | CL010004 |
| 0.7 m x 0.8 m (interlocking middle piece) | CL010002 |
| 0.7 m x 0.8 m (interlocking end piece) | CL010001 |



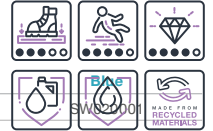


Rubber Mats

Worksafe

If greasy floors are a problem, this is your ideal anti-slip mat!

Improves comfort during prolonged standing. Hardwearing making it suitable for many industrial environments – a choice of two materials. Blue oil-resistant option is ideal for greasy, oily workstations where slips pose a threat. • Open holes capture spilt liquids and swarf. • Effectively reduces slip hazards where spillage is prevalent. • A complete mat that can be used as immediate safety solution. • Bevelled edging all round for trip protection. • Slip tested to DIN 51130. • Product Height: 12 mm



Size

0.9 m x 1.5 m

Black

SW010001



Blau

COBAdeluxe

Fatigue relief for heavy-duty workstations

Creates a safe and very comfortable standing surface. • Its thickness makes it a durable mat that can withstand impact. • Quickly cover large areas if used as a connecting system. • Made from hardwearing rubber providing longevity. • Available as a single mat or can be linked together with connectors for larger areas. • Product Height: 18.5 mm



Size

1 m x 1.5 m

Part Code

DM010002

Connector

DM010003

Edging

Black

Yellow

Long edge 1565 mm x 50 mm

P240-L1093-C09

P240-L1093-C09-YE

Short edge 1074 mm x 50 mm

P240-L1092-C09

P240-L1092-C09-YE



Light



Standard



Inter



Heavy

COBAmat®

Standing the test of time, our original safety matting

The original premium multi-purpose safety mat widely used across industry today. • An ideal choice for longer production lines, or for covering mezzanine floors. • Vinyl strips are interwoven, rather than welded, for better flexibility and lower risk of breaking. • Cross-ribbed grip to reduce slipping. • Fully reversible for added longevity. • Product Height: 12 mm



Product

Black

Blue

Red

Green

Light

CO01

CO02

CO03

CO04

Standard

CS01

CS02

CS03

CS04

Inter

CE01

CE02

CE03

CE04

Heavy

CD01

CD02

CD03

CD04



Lattice Mats

COBAmat® Workstation

Reduce slipping with this handy individual version of COBAmat®

Vinyl mat offering all the inherent benefits of COBAmat®, but in an individual mat. • Bright yellow safety bevelled edging all round to reduce trip hazards and highlight location. • Standard hole sized option is ideal for trapping swarf and debris. • Heavy-duty option (22 mm x 10 mm hole size). • Fire tested to BS EN 13501-1 and slip tested to DIN 51130. • Material: PVC • Product Height: 12 mm

| Sizes | Heavy | Standard |
|---------------|----------|----------|
| 0.6 m x 1.2 m | WD010701 | WS010701 |
| 1 m x 1.5 m | WD010702 | WS010702 |
| 1.2 m x 1.8 m | WD010703 | WS010703 |



Standard



Heavy



Diamond Grid

Lightweight 'portable' matting

Flexible vinyl mat that can be rolled, lifted and relocated with ease. • Designed to reduce slipping in wet environments. • Specially designed underside 'studs' enhance drainage performance. • Product Height: 8.5 mm



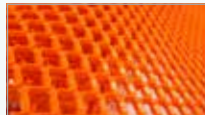
| Sizes | Blue | Grey | Orange |
|-------------|----------|----------|----------|
| 1 m x 4.8 m | DG020001 | DG060001 | - |
| 1 m x 9 m | DG020002 | DG060002 | - |
| 1 m x 2.4 m | - | - | DG170001 |



Blue



Grey



Orange

Work Deck

Ultra-strong floor tile system

Exceptionally robust and durable interlocking floor tile system. • Ideal for heavy-duty industrial environments. • Makes light work of withstanding the weight of pallet trucks and trolleys. • Open grid design captures debris and provides drainage for spilt fluids, for a dry, clean top standing surface. • Material: LDPE • Product Height: 25 mm



Blue



Green



Orange

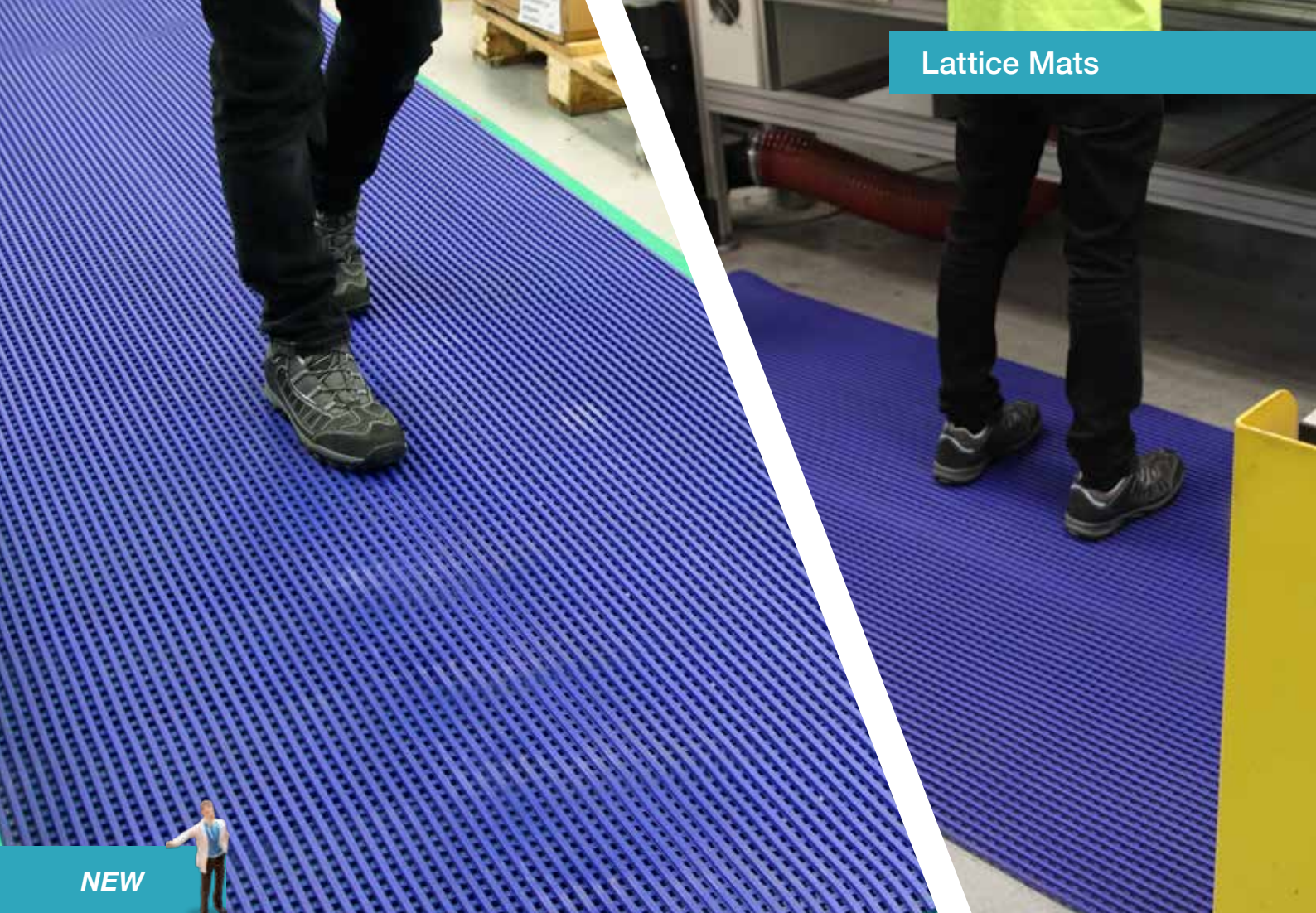


Black



| Sizes | Blue | Green | Orange | Black |
|------------------------|----------|----------|----------|----------|
| Tile 0.6 m x 1.2 m | WD020001 | WD040001 | WD170001 | WD010001 |
| Edge 0.6 m x 0.12 m | WD020002 | WD040002 | WD170002 | WD010002 |
| Corner 112 mm x 112 mm | WD020003 | WD040003 | WD170003 | WD010003 |



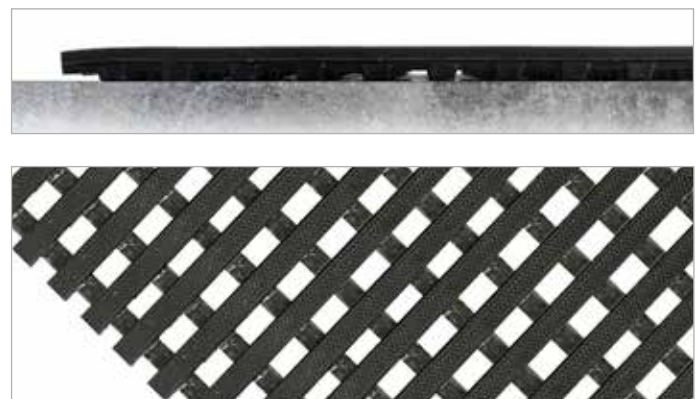


NEW

DeckStep

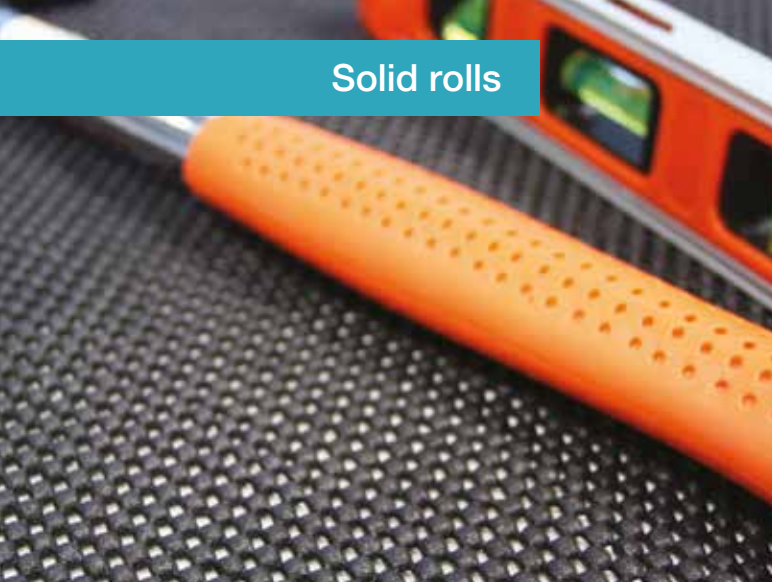
Multi-purpose ribbed vinyl matting for industry

Raise workers off the ground like traditional duckboard. • Reduce the risk of slips by removing feet from direct contact with spilt liquids. • Provides a much more comfortable standing surface than concrete. • Textured surface provides slip resistance. • Flexible and lightweight – easy to move and clean. • Strips are welded together for strength. • Slip tested to DIN 51130. • Material: PVC • Product Height: 11.5 mm ±0.5 mm



| Sizes | Black | Blue | Red | Green | Grey |
|---------------------------|-----------|-----------|-----------|-----------|-----------|
| 0.59 m x 10 m | DS010610 | DS020610 | DS030610 | DS040610 | DS060610 |
| 0.59 m x per linear metre | DS010610C | DS020610C | DS030610C | DS040610C | DS060610C |
| 1.0 m x 10 m | DS011010 | DS021010 | DS031010 | DS041010 | DS061010 |
| 1.0 m x per linear metre | DS011010C | DS021010C | DS031010C | DS041010C | DS061010C |
| 1.2 m x 10 m | DS011210 | DS021210 | DS031210 | DS041210 | DS061210 |
| 1.2 m x per linear metre | DS011210C | DS021210C | DS031210C | DS041210C | DS061210C |

Solid rolls

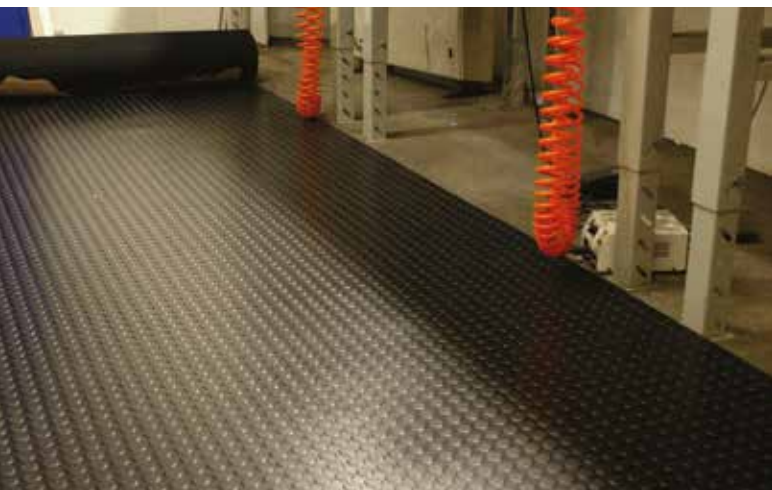


GripSafe

Protective liner for workbenches and much more!

Adaptable non-slip liner to protect both tools and shelves or workbenches. • Keep worktop items in place without the need for stands or clamps. • Fit inside drawers to reduce tools moving around. • Use on vehicle dashboards to prevent movement in transit. • Cuts easily, so you can fit to any space. • Product Height: 4 mm

| Sizes | Black |
|---------------|----------|
| 0.6 m x 1.2 m | GS010002 |
| 0.6 m x 10 m | GS010001 |



COBAdot

An easy to install choice for floor refurbishment

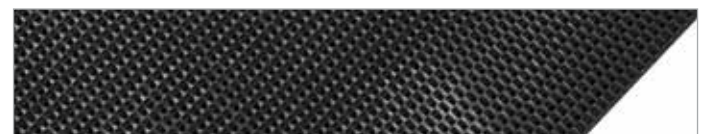
Versatile rubber floor covering. Studded surface looks smart, while being a practical choice for both industrial and commercial buildings. Nitrile option recommended for oily, greasy or chemical-prone locations based on its resilient properties. • Provides enhanced underfoot grip to reduce the risk of slipping. • Ease of installation minimises any down time – can be bonded or laid loose to the floor. • Product Height: 3 mm or 4.5 mm

| Sizes | Black | Black Nitrile | Grey | Grey Nitrile |
|-----------------------------------|------------|---------------|------------|--------------|
| 1.2 m x 10 m x 3 mm | CDS010001 | CDN010001 | CDS060001 | CDN060001 |
| 1.2 m x per linear metre x 3 mm | CDS010001C | CDN010001C | CDS060001C | CDN060001C |
| 1.2 m x 10 m x 4.5 mm | CDS010002 | CDN010002 | CDS060002 | CDN060002 |
| 1.2 m x per linear metre x 4.5 mm | CDS010002C | CDN010002C | CDS060002C | CDN060002C |

Solid Vinyl

Textured multi-purpose vinyl matting

An economical floor covering for many different applications when a thinner vinyl product is required. • Versatile, can be used on floors and workbenches. • Features a distinctive pyramid patterned anti-slip surface for personal and component protection. • Excellent chemical resistance. • Good sound insulation properties. • Product Height: 3 mm



| Sizes | Black |
|---------------|----------|
| 1.22 m x 5 m | SV010001 |
| 1.22 m x 10 m | SV010002 |



GripGuard

Grit surface matting with outstanding anti-slip properties

Mineral coated matting creates an abrasive 'super-grip' standing surface that sits flush to the floor. • Effectively reduces the risk of slipping in wet or oily conditions, where fluid spillage is prevalent. • Durable and oil-resilient, ideal for internal industrial use, as well as other workplace environments. • Easy installation making this the ideal product for those needing a rapid solution to floor safety. • Low profile negates creating a trip potential. • Material: Mineral (Aluminium Oxide) Coating with vinyl backing • Product Height: 2.25 ±0.2 mm

| Sizes | Black |
|--------------------------|-----------|
| 0.9 m x 6 m | GG010003 |
| 0.9 m x per linear metre | GG010003C |
| 0.9 m x 1.5 m | GG010002 |

Electrical Safety

Mats and accessories for use around electricity

Trailing cables regularly pose a risk in most buildings, but it's normally too late when they're identified as a trip hazard. Our range of cable protectors not only prevent damage to the cable and its contents but highlight the hazard to pedestrians and greatly reduce the risk of tripping. Switchboards and other high voltage areas present one of the biggest risks in any building. Properly insulating workers in such conditions is not only a legal requirement, but common sense.

COBASwitch

Specialist safety matting for high voltage areas

Designed specifically for use in front of live switchboards and high voltage equipment for personal protection against electrical shocks. • Ribbed rubber surface provides extra underfoot grip. • Rubber has effective electrical insulating properties. (See individual volt testing.) • 6 mm tested to 11,000 volts for 450 volt rated working. • 9.5 mm tested to 15,000 volts for 650 volt rated working. • 9.5 mm conforms to BS921/1976.

| Sizes | 6mm | 9.5mm |
|--------------------------|-----------|-----------|
| 0.9 m x 10 m | SM010010 | SM010030 |
| 0.9 m x per linear metre | SM010010C | SM010030C |
| 1.2 m x 10 m | SM010020 | SM010040 |
| 1.2 m x per linear metre | SM010020C | SM010040C |



COBASwitch VDE

VDE approved electrical switchboard matting for personal protection

Lightweight VDE approved mat designed for use in front of open switchboards and high voltage equipment. • Provides safety for operatives against electric shocks. • Fine fluted surface has slip-resistance benefits. • Tested to 50,000 volts according to DIN EN60243-1 (VDE0303 part 21) IEC 60243-2:1996.

| Sizes | Grey |
|------------------------|-----------|
| 1 m x 10 m | SM060010 |
| 1 m x per linear metre | SM060010C |



COBASwitch BS EN: 61111

Electrical insulating matting that conforms to BS EN 61111:2009

Specialist electrical insulating matting to protect operatives from electrical shocks. • Conforms to the most recent internationally recognised safety standard IEC 61111:2009 /BS EN 61111:2009. • Designed specifically for use in front of switchboards and for other areas with high voltage equipment. • Three thicknesses available to meet the different classes of working voltage, Class 0, Class 2 and Class 4. • Colour coded on the reverse clearly identifying the working voltage classification. • Ribbed surface helps to provide a firmer footing, reducing the risk of slips while improving standing comfort.

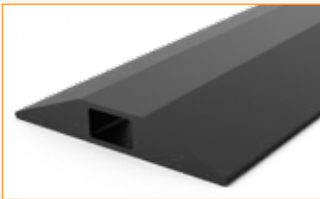
| Size | Part Code | Tested to | Working Voltage | Withstand Tested To |
|-------------------------------|-----------|--------------------------|-----------------|---------------------|
| 1 m x 10 m x 3 mm | SM010050 | BS EN 61111:2009 Class 0 | 1KV | 10KV |
| 1 m x per linear metre x 3 mm | SM010050C | BS EN 61111:2009 Class 0 | 1KV | 10KV |
| 1 m x 10 m x 4 mm | SM010060 | BS EN 61111:2009 Class 2 | 17KV | 30KV |
| 1 m x per linear metre x 4 mm | SM010060C | BS EN 61111:2009 Class 2 | 17KV | 30KV |
| 1 m x 10 m x 5 mm | SM010070 | BS EN 61111:2009 Class 4 | 36KV | 50KV |
| 1 m x per linear metre x 5 mm | SM010070C | BS EN 61111:2009 Class 4 | 36KV | 50KV |



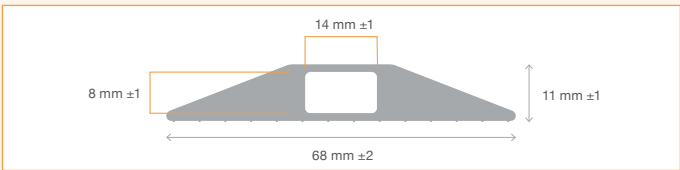
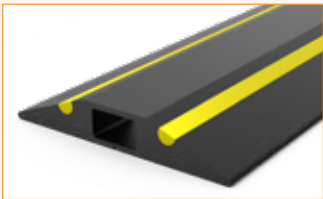


REDUCE TRIP
HAZARDS

GP1



GP1 Safety

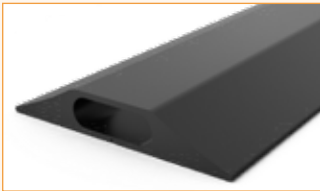


CablePro GP
All-purpose cable cover available in 3 m or 9 m lengths

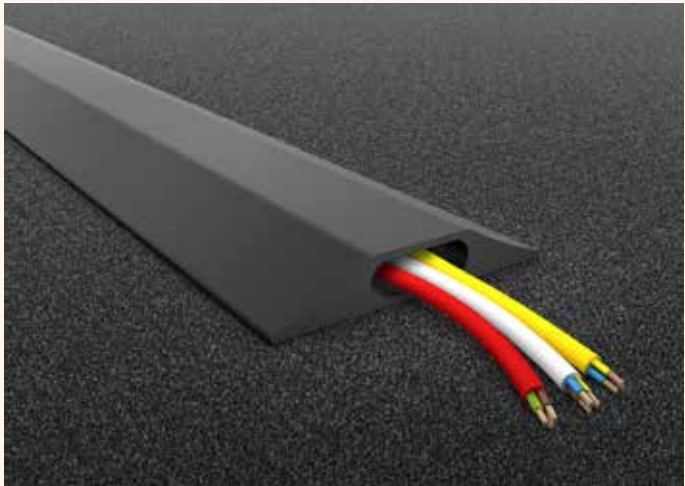
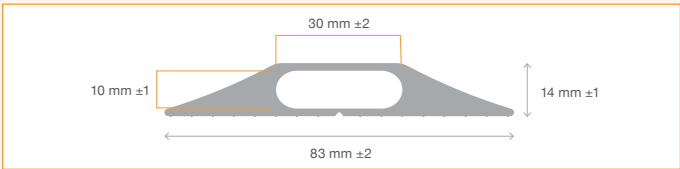
Reduce trip hazards caused by trailing cables. • Protect cables and wires from being pulled and causing costly damage to equipment. • Hazard strip version for increased visibility. • Tapered edges to reduce trip hazards. • For inside and outside use. • Ideal for offices, warehouses, events, shows and exhibitions.

| Part | Colour | 3m | 9m |
|------------|--------------|----------|----------|
| GP1 | Black | CP010012 | CP010005 |
| GP1 Safety | Black/Yellow | CP010711 | CP010701 |
| GP2 | Black | CP010013 | CP010006 |
| GP2 Safety | Black/Yellow | CP010712 | CP010702 |

GP2



GP2 Safety

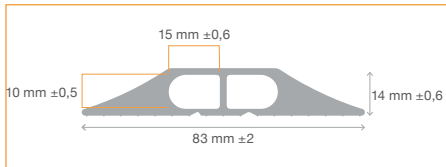
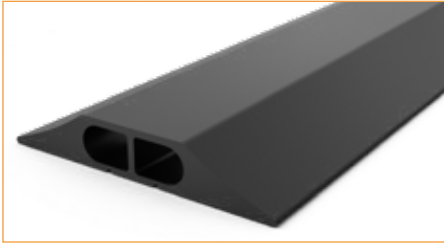


CablePro Data

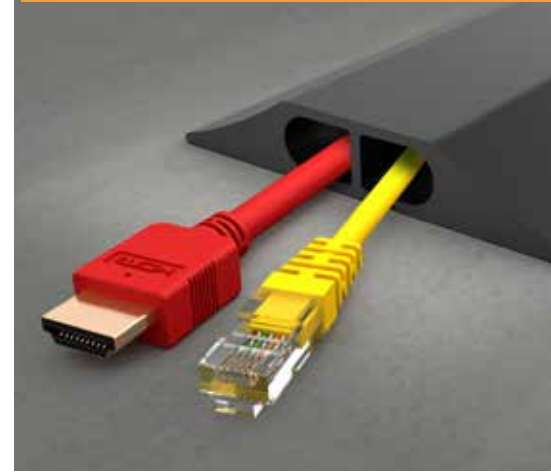
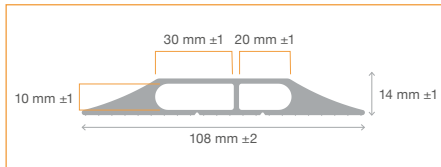
Protect data cables, reduce trip hazards

Ideal for keeping multiple cable types separated. • Seam in base for snapping in cables. • Reduce trip hazards caused by trailing cables. • Protect cables and wires from being pulled and causing costly damage to equipment.

Data1



Data2



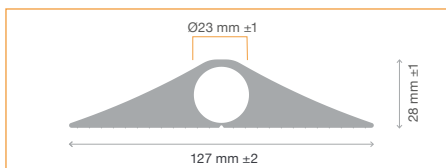
| Part | Colour | 3m | 9m |
|-------|--------|----------|----------|
| Data1 | Black | CP010010 | CP010003 |
| Data2 | Black | CP010011 | CP010004 |

CablePro HD

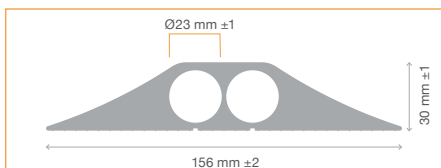
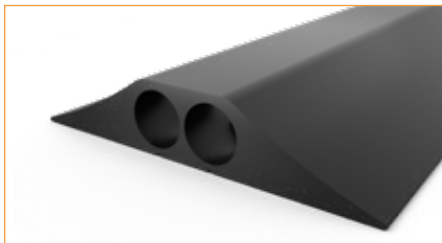
One or two duct heavy-duty cable protector

Tough ramped edges keep cables protected from wheeled traffic such as cars and forklifts. • Large 23 mm diameter channels accommodate heavy-duty cables. • Suitable as indoor or outdoor cable protector.

HD1



HD2



| Part | Colour | 3m | 4.5m | 9m |
|------|--------|----------|----------|----------|
| HD1 | Black | CP010007 | - | CP010001 |
| HD2 | Black | - | CP010009 | CP010002 |

CablePro Mat

Designed to be laid over cables to reduce trip hazards

Special cable mats for protection from tripping hazards due to loose cables lying around. • Extremely durable nylon surface in dappled colour shades. • Cleated non-slip backing made from durable nitrile rubber with integrated cable run. • Edge in hazard stripe. • Light-resistant and suitable for underfloor heating. • Anti-static.

| Size | Part Code |
|---------------|-----------|
| 0.4 m x 1.2 m | CPM010701 |



Rubber Sheetting

A complete range of quality rubber sheet material for countless applications

Rubber sheet is used for a myriad of purposes including waterproof seals and gaskets, shotblasting, and food and beverage applications. With over 40 grades of rubber material the choice ranges from premium, through to economy options. Available to order in rolls and also by the metre.

| Sizes | 1 | 2 | 3 | 4 | 5 | 6 | 7 | 8 |
|-----------------------|----------|----------|-----------|----------|----------|----------|----------|----------|
| 1.4 m x 10 m x 1.5 mm | CRS00001 | - | EPDM00001 | - | NIS00001 | NES00001 | FWR00001 | - |
| 1.4 m x 10 m x 1.8 mm | - | IRS00001 | - | - | - | - | - | - |
| 1.4 m x 10 m x 3 mm | CRS00002 | IRS00002 | EPDM00002 | SRS00001 | NIS00002 | NES00002 | FWR00002 | PRS00001 |
| 1.4 m x 10 m x 4 mm | - | - | - | - | - | - | FWR00003 | - |
| 1.4 m x 10 m x 4.5 mm | CRS00003 | IRS00003 | EPDM00003 | SRS00002 | NIS00003 | NES00003 | - | - |
| 1.4 m x 10 m x 6 mm | CRS00004 | IRS00004 | EPDM00004 | SRS00003 | NIS00004 | NES00004 | FWR00004 | PRS00002 |
| 1.4 m x 10 m x 12 mm | - | - | - | SRS00004 | - | - | - | - |
| 1.4 m x 5 m x 8 mm | CRS00005 | - | - | - | - | - | - | - |
| 1.4 m x 5 m x 10 mm | CRS00006 | IRS00005 | - | - | - | NES00005 | FWR00005 | PRS00003 |
| 1.4 m x 5 m x 12 mm | CRS00007 | IRS00006 | - | - | - | NES00006 | - | PRS00004 |
| 1.4 m x 5 m x 20 mm | CRS00008 | - | - | - | - | NES00007 | - | - |
| 1.4 m x 5 m x 25 mm | CRS00009 | - | - | - | - | NES00008 | - | - |



1. Commercial Black Rubber

General purpose grade for water applications and diluted chemicals

Versatile 'general purpose' grade rubber sheeting, often used in marine applications. • Ideal for low cost waterproof seals and gaskets. • 68 degrees shore A hardness.



2. Insertion Black Rubber

Features embedded textile reinforcement for added increased tensile strength and tear resistance

Suitable for use in air, hot water and hydraulic services. • A popular gasket material for applications with high compression loads. • 68 degrees shore A hardness. • Tensile strength at break: 3.0 Mpa.

3. EPDM Rubber

Excellent resistance to ozone, oxidants, water and harsh weather conditions

High performing all rounder, ideal for marine and outdoor applications.
 • Common uses include; seals, o-rings, glass-run channels, radiators, garden and appliance hose, tubing, pond liners, washers, belts and electrical insulation.

4. Shotblast Rubber

Cost-effective, abrasion-resistant rubber sheeting

Smooth surfaced, economical sheeting with high tensile strength. • Ideal for shot-blast cabinet lining, chute lining, skirting rubber, seals and scrapers.

5. Commercial Black Nitrile Rubber

Exceptional resistance to heat, oils, fuels, chemicals and most solvents

Offers strong resistance to heat aging - a key advantage over natural rubber for the automotive industries. • Good abrasion resistance. • 62 degrees shore A hardness.



6



7



6. Commercial Black Neoprene Rubber

High resistance to mineral oils, greases, dilute acids and alkalis

Good ageing and weathering properties, ideal for outdoor use. • Hardwearing Neoprene is heat, chemical, oil, fire and ozone resistant. • 65 degrees shore A hardness. • Tensile strength at break: 6.0 Mpa.

7. Food Quality White Rubber Sheet

White, non-marking rubber for the food and beverage industry

Non-toxic and with high temperature range, ideal for use in the preparation and storage of food and beverages. • Also used in pharmaceutical and medical industries. • Manufactured from FDA approved materials. • Avoid vegetable/animal oils. • 62 degrees shore A hardness.

8



8. Para Shotblast Rubber

Unbeatable tensile strength, natural tan rubber

Excellent resistance to wear and abrasion. • Widely used as protective screening for shotblasting. • Also used in strip or gasket form where durability is essential. • 45 degrees shore A hardness. • Tensile strength at break: 15 Mpa.

ESD Matting & Accessories

All you need for ESD protection

Electrostatic Discharge (ESD) can be a problem in some working environments, and potentially damaging to electrical components. Floors, chairs, work surfaces and packaging can all create static electricity, which when released into an electronic device becomes known as Electrostatic Discharge. We have a comprehensive range of industry tested ESD floor mats and accessories to protect you and your electronic components against the harmful effects of static electricity.

COBAstat®

Comfortable anti-static mat for dry environments

Comfortable and durable floor mat protects operatives from static build-up. • ESD version of our popular Orthomat® anti-fatigue range. • Grounded via a 10 mm male stud fitted to the mat. • Maximum performance when used with grounding wire. • Available as a handy COBAstat® Floor Kit with accessories provided. • Product Height: 9 mm



| Sizes | Grey |
|--|-----------|
| 0.6 m x 0.9 m | AS060001 |
| 0.9 m x 1.5 m | AS060002 |
| 0.9 m x 18.3 m | AS060003 |
| 0.9 m x per linear metre (max. 18.3 m) | AS060003C |

Full ESD Kit Available



COBAelite® ESD

Bubble surfaced mat to tackle fatigue in ESD sensitive areas

Static-dissipative anti-fatigue mat for comfort and safety. • Conductive buried layer neutralises static charge, protecting components. • Comfortable bubbled surface promotes subtle movement further reducing fatigue. • Grounded via a 10 mm male stud fitted to the mat. • Meets or exceeds IEC61340-5-1 resistance requirements. • Resistance to a groundable point (Rgp): $2.4 \times 10^6 \Omega$ • Material: PU • Product Height: 14 mm



| Sizes | Black |
|---------------|----------|
| 0.6 m x 0.9 m | SE010001 |
| 0.9 m x 1.2 m | SE010003 |
| Special size | SE010010 |





Deckplate Anti-Static

Hardwearing dual layer mat for static sensitive areas

Hardwearing anti-fatigue mat for static sensitive areas. • Conductive buried layer protects operatives and components. • Diamond pattern surface is attractive and slip resistant. • Top surface provides resilience to many industrial chemicals. • Grounded via a 10 mm male stud fitted to the mat. • Supplied with ramped edges as standard to reduce the risk of trips. • Tested to EN14041 resistance requirements. • Material: Vinyl top surface with PVC foam backing (fusion bonded, not glued) • Product Height: 14 mm



Sizes

| | Black |
|--------------------------|------------|
| 0.6 m x 0.9 m | DPS010609 |
| 0.9 m x 1.5 m | DPS010915 |
| 0.9 m x 18.3 m | DPS010005 |
| 0.9 m x per linear metre | DPS010005C |
| 1.2 m x 18.3 m | DPS010007 |
| 1.2 m x per linear metre | DPS010007C |



NEW



Senso Dial

Tough ESD matting for every environment

Durable ESD mat for demanding workplaces with excellent all-round safety features. • Soft foam backing provides exceptional fatigue-relief. • Patterned rubber top surface provides grip in oily or slippery situations. • Ramped edges to reduce trips. • Bespoke sizes and shapes available. • R_p -p and $R_g < 1 \times 10^9 \Omega$ tested per IEC 61340-4-1 • Material: SBR/NBR top surface, EPDM foam base • Product Height: 10 mm



Sizes

| | Black |
|------------------------------------|-----------|
| 1 m x 10 m | SN010002 |
| 1 m x per linear metre (max. 10 m) | SN010002C |
| 1.2 m x 10 m | SN010003 |
| 1.2 m x per linear metre | SN010003C |



ESD Rubber Matting



Benchstat

Premium ESD work bench mat, with triple layer construction

Superior performance static-dissipative work surface matting. • Textured vinyl top surface is chemical and scratch resistant. • Buried middle layer conducts ESD protecting operatives and components. • Foam base cushions dropped components, while providing a comfortable work surface. • Grounded via a 10 mm male stud fitted to the mat. • Meets or exceeds IEC61340-5-1 resistance requirements. • Point to point resistance (Rp-p): $3.1 \times 10^7 \Omega$ • Resistance to a groundable point (Rgp): $1.4 \times 10^7 \Omega$ • Material: Triple layer vinyl with a buried conductive layer • Product Height: 3.2 mm

| Sizes | Blue | Grey |
|--------------------------------------|-----------|-----------|
| 0.6 m x per linear metre (max. 30 m) | IS020001C | IS060001C |
| 0.9 m x per linear metre (max. 30 m) | IS020002C | IS060002C |
| 1.2 m x per linear metre (max. 30 m) | IS020003C | IS060003C |
| 0.6 m x 1.2 m | IS020004 | IS060004 |
| 0.6 m x 30 m | IS020001 | IS060001 |
| 0.9 m x 30 m | IS020002 | IS060002 |
| 1.2 m x 30 m | IS020003 | IS060003 |

HR Matting

Quality ESD bench matting, with dual layer construction

Static-dissipative, durable work bench mat. • Tough vinyl top surface is both liquid and scratch resistant. • Conductive buried layer protects components and employees from harmful electrostatic. • Grounded via a 10 mm male stud fitted to the mat. • Meets or exceeds IEC61340-5-1 resistance requirements. • Point to point resistance (Rp-p): $7.8 \times 10^7 \Omega$ • Resistance to a groundable point (Rgp): $4.0 \times 10^7 \Omega$ • Material: Solid vinyl with a buried conductive layer • Product Height: 2.4 mm

| Sizes | Blue | Grey |
|--|--------------------|----------|
| 0.6 m x 1.2 m | HR020001 | HR060001 |
| 1.2 m x 3 m | HR020002 | HR060002 |
| 1.2 m x 15.3 m | HR020003 | HR060003 |
| 1.2 m x per linear metre (max. 15.3 m) | HR020003CHR060003C | |



ESDs

COBAstat® Floor Kits

Each COBAstat® Floor Kit includes:

- COBAstat floor mat – Rv: $1.1 \times 10^7 \Omega$
- Male stud to connect to grounding wire.
- 2 m floor mat grounding wire.
- 2 x heel grounders.
- Earth bonding plug to connect lead to earth.

| Sizes | Grey |
|--------------------------|--------------|
| 0.6 m x 0.9 m | AS060001KUK |
| 0.9 m x 1.5 m | AS060002KUK |
| 0.9 m x per linear metre | AS060003CKUK |

Benchstat Kits

Each Benchstat kit includes:

- Benchstat mat - Rp-p: $3.1 \times 10^7 \Omega$
- Male stud to connect to common point wire.
- Wristband with 10 mm male stud to connect to coil cord.
- Coil cord 10 mm male stud and 10 mm female stud 1.8 m long.
- Common point ground wire 10 mm male stud and 10 mm female stud incorporating 4 mm banana socket - length 4.5 m.
- Earth bonding plug to connect lead to earth.

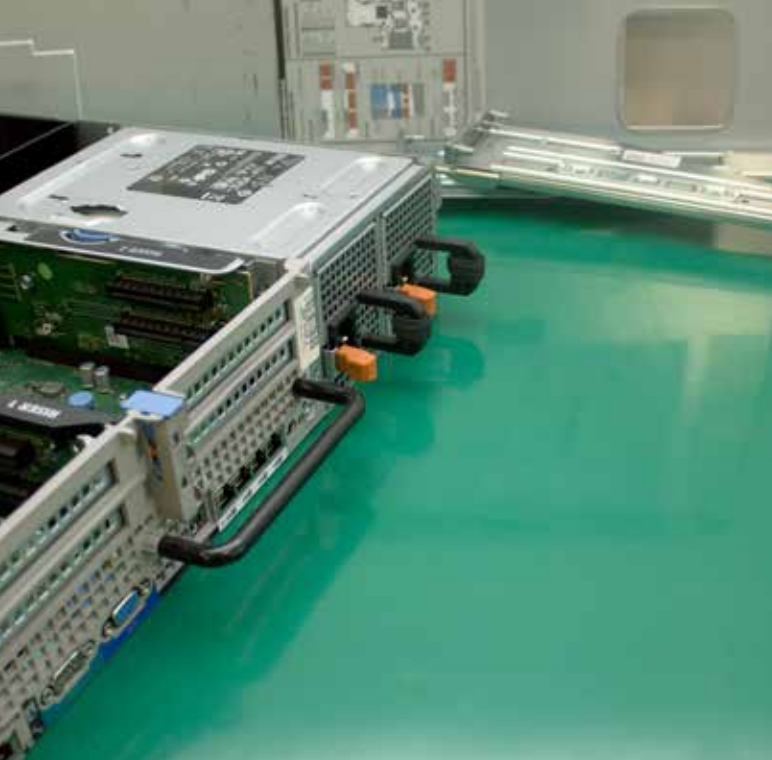
| Sizes | Blue | Grey |
|--------------------------|--------------|--------------|
| 0.6 m x 1.2 m Kit | IS020004KUK | IS060004KUK |
| 0.6 m x 1.5 m Kit | IS020005KUK | IS060005KUK |
| 1.2 m x per linear metre | IS020003CKUK | IS060003CKUK |

HR Matting Kits

Each HR Matting kit includes:

- HR Mat - Rp-p: $7.8 \times 10^7 \Omega$. Rgp: $4.0 \times 10^7 \Omega$.
- Wristband with 10 mm male stud to connect to coil cord.
- Coil cord 10 mm male stud and 10 mm female stud 1.8 m long.
- Common point ground wire 10 mm male stud and 10 mm female stud incorporating 4 mm banana socket - length 4.5 m.
- Earth bonding plug to connect lead to earth.

| Sizes | Blue | Grey |
|---------------|-------------|-------------|
| 0.6 m x 1.2 m | HR020001KUK | HR060001KUK |
| 1.2 m x 3 m | HR020002KUK | HR060002KUK |



ESD Matting

Conductive Rubber Bench Matting

Two layer anti-static rubber matting

Dual layer mat manufactured from rubber with coloured top surface and black bottom surface. • Top surface: 0.5 mm thick static-dissipative layer. • Solder iron resistant and low reflecting bench mat ideal for electrical component manufacturing and refurbishment. • Grounded via a 10 mm male stud fitted to the mat. • Conforms to IEC 61340-5-1. • Point to point resistance (Rp-p): $5.2 \times 10^7 \Omega$ • Material: Rubber • Product Height: 2 mm

| Size | Grey | Green |
|----------------------|-----------|-----------|
| 0.6 m x 1.2 m x 2 mm | CDR060004 | CDR040004 |



Grau



Grün



ESD Rubber Bench Mat

Economical ESD work bench mat

Rubber ESD bench mat fitted with 10 mm male stud. • Solder iron resistant and low reflecting surface, ideal for working with electrical components. • Easy to clean smooth surface. • Conforms to IEC 61340-5-1. • Point to point resistance (Rp-p): $1.2 \times 10^4 \Omega$ • Material: Rubber • Product Height: 2 mm

| Size | Black |
|----------------------|------------|
| 0.6 m x 1.2 m x 2 mm | ESDB010005 |



ESD Rubber Floor Mat

Easy ESD protection

No fuss ESD rubber floor mat manufactured from black rubber. • Easy clean, single layer mat for light use. • Cost effective anti-static solution. • Grounded via a 10 mm male stud fitted to the mat. • Conforms to IEC 61340-5-1. • Resistance to a groundable point (Rgp): $6.5 \times 10^4 \Omega$ • Material: Rubber • Product Height: 3 mm

| Size | Black |
|----------------------|------------|
| 0.6 m x 1.2 m x 3 mm | ESDF010005 |



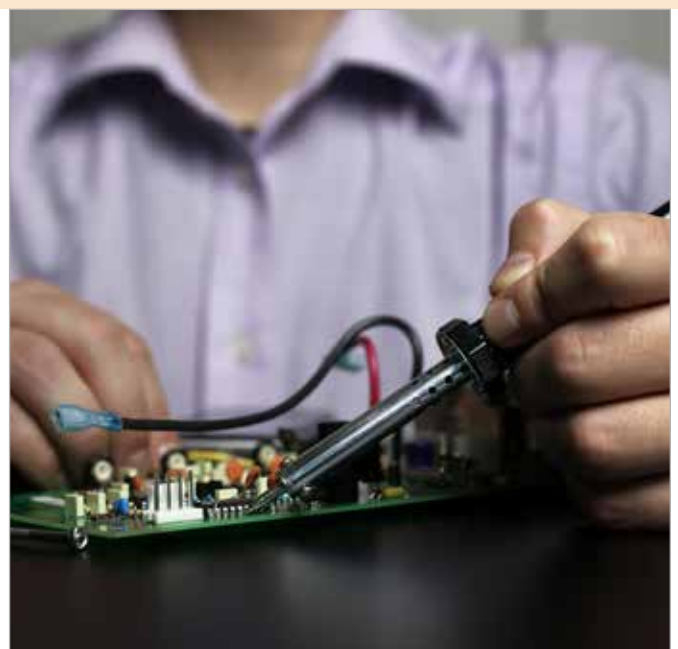
Conductive Neoprene Bench/Floor Mat

Extra tough conductive matting

Heavy-duty neoprene rubber for demanding environments. • Suitable as an ESD work surface mat or hardwearing anti-static floor mat. • Solder iron resistant and low reflecting, ideal for electrical component manufacturing and refurbishment. • Grounded via a 10 mm male stud fitted to the mat. • Conforms to IEC 61340-5-1. • Point to point resistance (Rp-p): $1.8 \times 10^8 \Omega$ • Material: NBR • Product Height: 2 mm



| Size | Black |
|----------------------|-----------|
| 0.6 m x 1.2 m x 2 mm | CBF010004 |



Wristbands

Comfortable and functional grounding wristband

Crochet style elasticated, fully adjustable wristband, manufactured in the UK. • Woven silver monofilaments conduct static while providing excellent band to skin contact. • Fits to the coiled ground wire via a 10 mm male stud. • Meets or exceeds IEC61340-5-1.



Heel Grounder

Conducts harmful static for operator safety

Designed to ground the operator when used on suitable conductive or dissipative flooring. • Fully adjustable, lightweight design • Conductive tab ensures reliable and effective skin contact. • Two grounders recommended at all times for complete ESD safety.



UK Earth Bonding Plug

Standard plug to connect ESD floor or bench mats to earth

An ideal solution to connect bench and floor mats to ground to avoid injury to personnel and damage to components. • Works well with the anti-static wristband for personnel. • Neutral and mains voltage pins are made from plastic, whilst the earth pin is metal for guaranteed safety. • UK and EU versions available. • Does not have a resistor as this is integrated with the grounding wire.



Common Point Ground Wire

Safely grounds ESD Matting and operators

10 mm female stud at one end for connection to a 10 mm male stud on an Earth Bonding Plug. • 10 mm female stud for connection to the mat, along with a 10 mm male stud. • 4 mm banana socket for connection to operator coil cord. • Length: 4.5 m wire for connection to earth plug.

Floor Mat Grounding Wire

Help protect equipment from static with an earth grounding wire

Grounding wire for use with floor mats to help prevent static which could damage equipment. • Conforms to 10 mm connection. • Easy connection with female studs on each end. • Fitted with a 1 meg Ω resistor to help static discharge.

ESD accessories



| Product | Part Code |
|--------------------------|-----------|
| Wrist Band | HR000007 |
| Heel Grounder | HR000008 |
| Coil Cord | HR000006 |
| Common Ground Point Wire | HR000005 |
| Floormat grounding wire | HR000011 |
| Earth Bonding Plug - UK | HR000009 |



Coil Cord

For use with an ESD Wristband or Heel Grounder

PE conductive coil cord. • Good coil memory and tangle-free. • 1 meg Ω resistor incorporated for operator safety. • 10 mm female stud to 10 mm female stud. • Max length: 1.8 m.

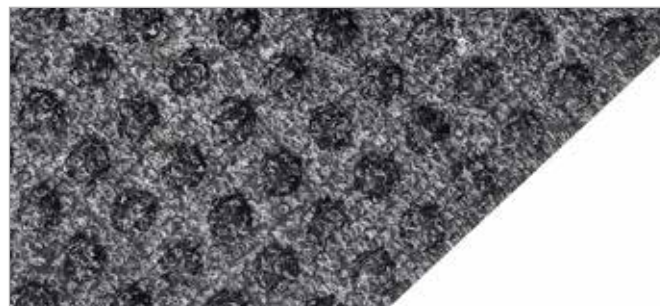


Superdry Heavy Traffic

Reduce dirt and water brought in by forklift trucks

Waffle pattern absorbs moisture and scrapes away dirt from forklift wheels. • Reduces the risk of slips caused by water ingress. • Reduces the risk of forklifts skidding or losing control on contaminated floor surfaces. • Helps to keep cleaning costs down during bad weather. • Simple to install using double sided adhesive tape. • Large mats can be installed individually or laid next to each other to cover larger areas. • Protects sub floor from damage. • Easy to clean with a vacuum or stiff brush. • Material: PP carpet with Rubber backing • Product Height: 10 mm

| Sizes | Charcoal |
|-------------------|-----------|
| 1.15 m x 1.8 m | WHT010005 |
| Double Sided Tape | Clear |
| 50 mm x 50 m | DST0001 |



Get in touch with your local team today!

United Kingdom

☎ +44 (0)1788 228 555
✉ sales@cobaeeurope.com
💻 www.cobaeeurope.com

Slovakia

☎ +421 41 507 11 12
✉ sales@cobaeeurope.sk
💻 www.cobaeeurope.sk

Germany

☎ +49 (2161) 2945-0
✉ verkauf@cobaeeurope.de
💻 www.cobaeeurope.de

France

☎ +33 (0)645309278
✉ sales@cobaeeurope.fr
💻 www.cobaeeurope.fr

Poland

☎ +48 (12) 446 92 30
✉ sales@cobaeeurope.pl
💻 www.cobaeeurope.pl

South Africa

☎ +27 (0)11 452 7961
✉ sales@cobafrica.com
💻 www.cobafrica.com



Contact us today

+44 0(116) 240 1088
sales@cobaeeurope.com
www.cobaeeurope.com
@COBAeurope
COBAeurope