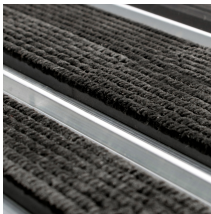
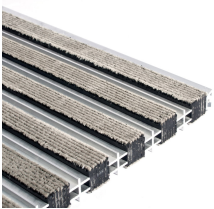


Plan.c

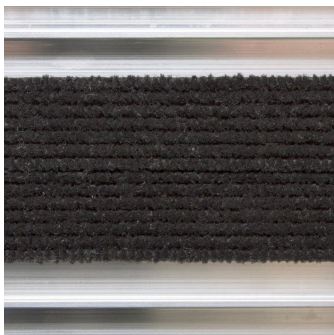
Protect against dirt and moisture with a robust aluminium system for high traffic entrances



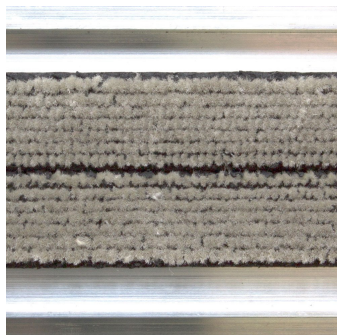
- Assembled in modules for easier transportation and installation.
- Profiles are connected via heavy-duty steel wire for added durability.
- Reversible closed surface aluminium entrance matting.
- Suitable for indoor use.
- Two surface options: Rubber profiles with nylon filaments / Rubber scraper profiles.
- Custom-made to order.



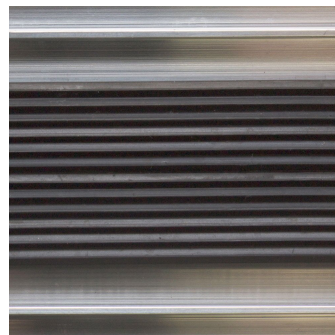
Styles Available



Black



Beige



Rubber

Part Number	Size	Colour	Weight (kg)
PLAN-C	Special	Grey, black, rubber	

Material	Aluminium rails, Buffed rubber strips or Black rubber strips.
Surface Finish	Nylon filaments or black rubber inserts
Product Height	12mm Low Profile, 18 mm Standard Profile
Durability	Heavy to very heavy traffic entrances
Environmental Resistance	Suitable for dry environments
UV Resistance	Yes
Typical Applications	Entrance areas
Installation Method	Installed in to recessed well
COO (Country of Origin)	NL
Guarantee	4 years
Notes	To achieve a uniform appearance consider hoovering the product in a single direction. Slip resistance specifications are based on the correct direction of travel i.e. perpendicular to the channels and inserts.

Get in touch | To order FREE samples or arrange a site visit please call +44 (0)1788 228 555 or email sales@cobaeurope.com

www.cobaeurope.com