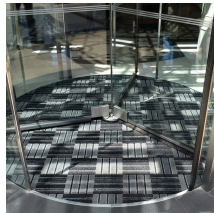


PathMaster3

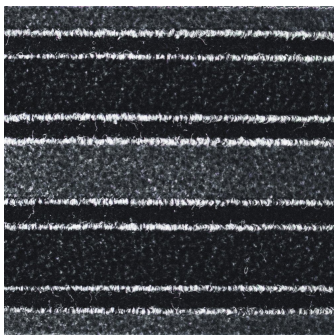
Unpack and lay in minutes, not hours



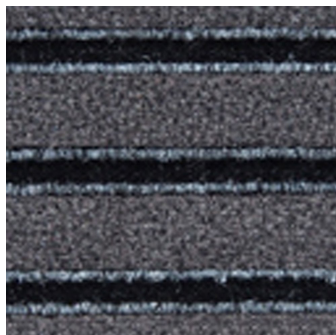
- Innovative product, a whole entrance mat in a box.
- Easier to transport than matting on a roll.
- Potentially less wastage compared with cutting from a roll.
- Simple entrance matting solution with practical and creative design impact.
- 'EasyInstall', just lay into place on the subfloor using a tackifier or adhesive.
- You only need to cut the last row of tiles.
- Hand tools can be used to cut.
- Can be cut to shape if needed.
- Solid surface design prevents dirt from falling through the mat, making maintenance easy with regular vacuuming.
- The rib features on each tile align perfectly, creating minimal installation waste.
- Numerous laying patterns offer added flexibility for creating desired finish.
- Individual tiles can be replaced if they become damaged, eliminating the need to replace the entire entrance matting area.
- No Shrinkage.



Styles Available



Anthracite Grey



Grey

Part Number	Size	Colour	Weight (kg)
PM010007	45 cm x 45 cm	Anthracite	1.1
PM010008	23.5 cm x 75 cm	Anthracite/Grey	0.87
PM060007	45 cm x 45 cm	Grey	1.1

Material	PP and PA
Backing	Bitumen
Product Height	13 mm
Product Weight	6.25 kg / m ²
Pile Height	8 mm
Durability	Medium to heavy traffic entrances
Absorbency	3 l/m ²
Pile Yarn Composition	Tufted PA6.6
Pile Weight	3 kg / m ²
Environmental Resistance	Suitable for indoor environments only
Installation Method	Loose lay, bonded or tackified to sub floor
COO (Country of Origin)	BE
Adhesive recommended by F.Ball for permanent bond	F3
Adhesive recommended by F.Ball for heavy-duty/wet areas	F74, F81, F84

Get in touch | To order FREE samples or arrange a site visit please call +44 (0)1788 228 555 or email sales@cobaeurope.com

www.cobaeurope.com