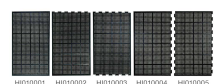
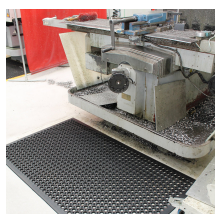
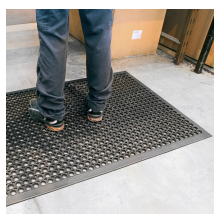
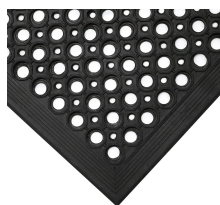


High-Duty

Reduce standing fatigue at larger or oily workstations



- A very comfortable alternative to cold hard floors.
- Open holes capture spilt liquids and swarf.
- Manufactured from a blend of rubber for better than average resistance to oil and chemicals.
- Available in standard mats, edged on all sides, or as interlocking modules for larger areas.
- Raised circular surface gives excellent underfoot grip.
- Slip tested to DIN 51130.



Parts

Part Number	Size	Colour	Weight (kg)
HI010001	0.9 m x 1.5 m	Black	8.9
HI010002	0.9 m x 1.5 m	Black	9
HI010003	0.9 m x 1.5 m	Black	9
HI010004	0.9 m x 1.5 m	Black	9
HI010005	0.9 m x 1.5 m	Black	9

Technical Specifications

Material	Natural rubber/25% NBR compound
Recycled Material Content %	62.07%
Natural Material Content %	30
Surface Finish	Circular pattern construction for extra grip and holes to allow drainage
Product Height	12 mm
Product Weight	9.2 kg
Max.	+70°C

Operating Temperature	
Resistance to Chemicals	Limited resistance to chemicals
Environmental Resistance	Suitable for wet and dry environments
UV Resistance	Moderate
Typical Applications	General industrial, Bars, Catering environments, Machine tool areas where swarf is prevalent
Installation Method	Loose lay interlocking mats
Cleaning Method	For regular maintenance, hose with water. For excessive dirt scrub with a mild detergent and rinse.
COO (Country of Origin)	IN
Tensile Strength	ASTM D412, 3 (+/-1)Nm/mm ²
Elongation	ASTM D412, 200% (+/-50%)
Application Temperature	18°C to 65.5°C
Slip Tested to	DIN 51130 - R10
Manufacturing process	Rubber moulding

Get in touch | To order FREE samples or arrange a site visit please call +44 (0)1788 228 555 or email sales@cobaeeurope.com

www.cobaeeurope.com