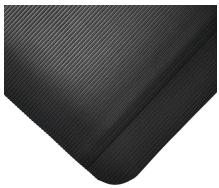


Fluted Anti-Fatigue

Simple and durable anti-fatigue mat



- Dual layer anti-fatigue mat combining soft foam backing with durable anti-slip surface.
- Ribbed surface helps to provide a firmer footing.
- 'Cushion' foam backing provides comfort underfoot.
- Ramped edges reduce the risk of tripping and allow easy trolley access.
- Available as single workstation mats or in rolls.



Parts

Part Number	Size	Colour	Weight (kg)
FA010001	0.6 m x 0.9 m	Black	4.15
FA010002	0.9 m x 1.5 m	Black	10.38
FA010003	0.9 m x 3 m	Black	20.76
FA010004	0.9 m x 15.3 m	Black	105.8
FA010004C	0.9 m x per linear metre	Black	6.91

Technical Specifications

Material	Vinyl top surface with PVC foam backing (fusion bonded, not glued)
Surface Finish	3 mm fluted ribbed embossed surface
Product Height	12.5 mm
Roll Length	15.3 m
Min. Operating Temperature	0°C
Max. Operating Temperature	+60°C
Resistance to Chemicals	The PVC top surface provides limited resistance to chemicals and oils
Environmental Resistance	Suitable for dry indoor environments
Typical Applications	Packing stations, Assembly areas, Production lines where regular turning occurs
Installation Method	Loose lay
Cleaning Method	Brush/mop the top surface
COO (Country of	CN

Get in touch | To order FREE samples or arrange a site visit please call +44 (0)116 240 1088 or email sales@cobaeurope.com

www.cobaeurope.com