

**NEW**



## Technical Specification

<b>Backing:</b>	Bitumen
<b>Product Height:</b>	13mm
<b>Product Weight:</b>	6.25 kg/m <sup>2</sup>
<b>Pile Height:</b>	8mm
<b>Durability:</b>	Medium to heavy traffic entrances
<b>Absorbency:</b>	3 l/m <sup>2</sup>
<b>Environmental Resistance:</b>	Inside use only
<b>Installation Method:</b>	Adhered or tackified to sub floor
<b>Pile Yarn Composition:</b>	Nylon tufted 6.6
<b>Country of Origin:</b>	Belgium
<b>Permanent Adhesive Recommendation:</b>	F3
<b>Heavy-Duty / Wet Area Adhesive Recommendation:</b>	F74, F81, F84

Size	Anthracite	Grey
45cm x 45cm	PM010007	PM060007
Size	Anthracite/Grey	
23.5cm x 75cm	PM010008	

## PathMaster<sup>3</sup>

**Quality entrance matting with the practical aspect of tiles**

- Easier to transport than matting on a roll.
- Easy to install - just lay into place on the subfloor using a tackifier or adhesive. You only need to cut the last row of tiles.
- Solid surface prevents dirt from falling through the mat, making cleaning a quick task.
- Potentially less wastage when compared with cutting from a roll.
- Numerous laying patterns offer added flexibility.

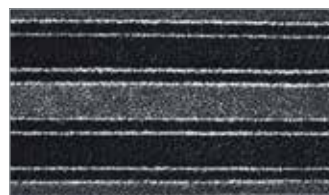
### Colour Options



Anthracite



Grey



Anthracite/Grey