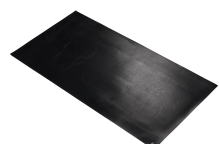
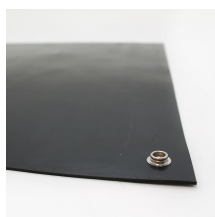
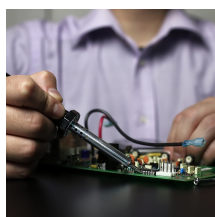
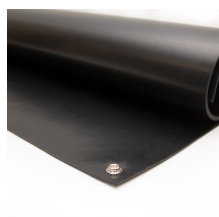


Conductive Neoprene Bench/Floor Mat

Extra tough conductive matting



- Heavy-duty neoprene rubber for demanding environments.
- Suitable as an ESD work surface mat or hardwearing anti-static floor mat.
- Solder iron resistant and low reflecting, ideal for electrical component manufacturing and refurbishment.
- Hardwearing Neoprene is heat, chemical, oil, fire and ozone resistant.
- Grounded via a 10 mm male stud fitted to the mat.
- Conforms to IEC 61340-5-1.
- Point to point resistance (Rp-p): $1.8 \times 10^8 \Omega$
- Resistance to a groundable point (Rgp): $4.3 \times 10^6 \Omega$



Parts

Part Number	Size	Colour	Weight (kg)
CBF010004	0.6 m x 1.2 m x 2 mm	Black	2.45

Technical Specifications

Material	NBR
Surface Finish	Smooth
Product Height	2 mm
Min. Operating Temperature	-30°C
Max. Operating Temperature	+70°C
Environmental Resistance	Suitable for dry indoor environments
Accessories	ESD accessories available
COO (Country of Origin)	CN

